



## THE JOURNEY TO OWNING YOUR HOME

Mimosa Homes has created an unrivalled home buying experience that puts you in control.

We're certain that you'll find the right home for you in our portfolio of many homes that have been carefully designed for modern living and the demands of a busy family life.

We know that you want your home to be as individual as you are so our floor plans can be redesigned to suit your needs, giving you a beautiful built home at a volume builder's price.

Mimosa Homes' directors oversee each and every project. It is in their best interest that your home build runs smoothly and without delays or hiccups.

Our trained staff will hold your hand through the whole

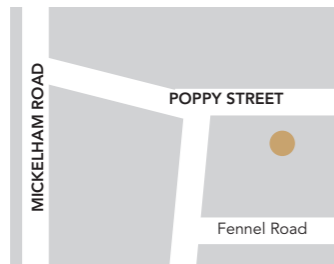
building process and are accessible to answer any questions you may have about your home.

Our business model is structured around good old customer service. At Mimosa, you will be known by your first name and you'll be given the attention you deserve.

Our strict project planning and dedicated team allows us to complete your home before the contract deadline, our average construction period is 20 weeks.

Our offer with fixed price contracts can give you the peace of mind so you won't get any surprises at the end.

Our amazing standard inclusions are included in our base price – our competitors call these extras.



### DISPLAY CENTRE **OPENING HOURS**

**MONDAY - WEDNESDAY** 12.00PM TILL 5.00PM  
**THURSDAY & FRIDAY** BY APPOINTMENT ONLY  
**SATURDAY & SUNDAY** 11.00AM TILL 5.00PM

### DISPLAY CENTRE **ADDRESS**

15-17 Poppy Street, Mickleham, VIC 3064

# BOTANICAL ESTATE

## MICKLEHAM



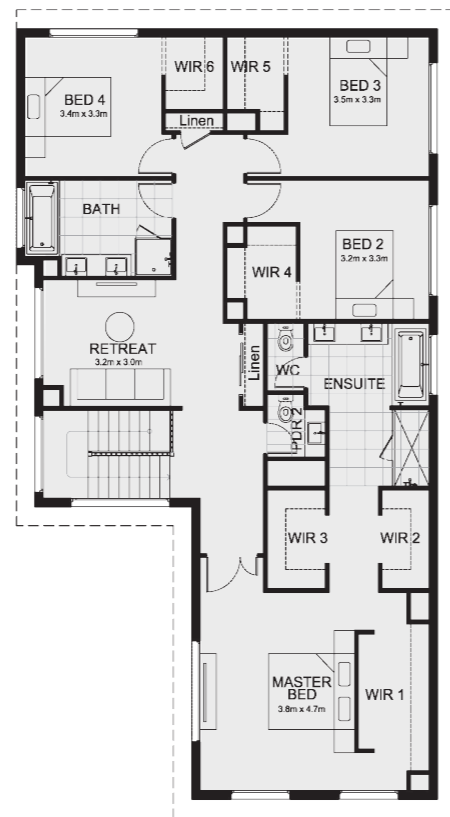
**IBIZA 407**  
PORCHA FACADE



**SABA 331**  
VELLA FACADE



GROUND FLOOR PLAN



FIRST FLOOR PLAN

MINIMUM LOT REQUIRMENTS		TOTAL AREAS		LIVING AREAS		BEDROOMS	
Exterior Length	21,290mm	House	311.0sqm	Family/Meals	9950 x 5630	Master Suite	4700 x 3770
Exterior Width	11,900mm	Garage	38.0sqm	Theatre	4450 x 3700	Bed 2	3300 x 3150
Minimum Lot Width Req	14m	Porch	9.5 sqm	Retreat	2510 x 2700	Bed 3	3300 x 3450
Minimum Lot Depth Req	28m	Alfresco	19.9sqm	Study	3180 x 3650	Bed 4	3300 x 3450
Lot Depths vary dependant on facade chosen		<b>Total</b>	<b>378.4 m<sup>2</sup></b>				
			<b>40.7 sq</b>				

House size on brochure based on Vista Render facade. Size may vary dependant on facade. Refer to working drawings for complete dimensions. Facade images are to be used as a guide only, may depict upgrade options and may not be house specific. Facade details such as entry doors, render, window sizing, window finishes & window placement may vary between house types and sizes. Concrete driveway, Landscaping, Timber decking and Fencing is not included. Please obtain house specific drawings from your New Home Consultant to assist you in making your facade choice.



**LIVING AREAS**

Family/Meals	8160 x 4950
Lounge	4540 x 3950
Theatre	4500 x 3700

**BEDROOMS**

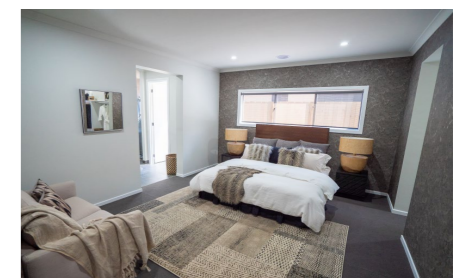
Master Suite	4000 x 4780
Bed 2	3210 x 3050
Bed 3	3200 x 3400
Bed 4	3050 x 3040

**TOTAL AREAS**

House	250.9 sqm
Garage	36.5 sqm
Porch	4.7 sqm
Alfresco	14.2 sqm
<b>Total</b>	<b>306.3 m<sup>2</sup></b>
	<b>33.0 sq</b>

**MINIMUM LOT REQUIRMENTS**

Exterior Length	23,450mm
Exterior Width	14,700mm
Minimum Lot Width Req	16m
Minimum lot Depth Req	32m



House size on brochure based on Boyd facade. Size may vary dependant on facade. Refer to working drawings for complete dimensions. Facade images are to be used as a guide only, may depict upgrade options and may not be house specific. Facade details such as entry doors, render, window sizing, window finishes & window placement may vary between house types and sizes. Concrete driveway, Landscaping, Timber decking and Fencing is not included. Please obtain house specific drawings from your New Home Consultant to assist you in making your facade choice.