

**Bushfire Management Plan
Mahala Stages 7, 9, 11, and 12
Anstey Road Forrestdale**



Prepared for:
Anstey Road Developments Pty Ltd

October 2025

Prepared by:



Surefire Environmental Pty Ltd
sue@surefireenvironmental.com
0439 435 110

Surefire Environmental Pty Ltd

Stages 7, 9, 11, and 12 Mahala Estate, Forrestdale Bushfire Management Plan

Distribution List

Client	Contact name	Date
Anstey Road Developments Pty Ltd	Luke Oliver, Senior Development Manager	20 October 2025

Version

Version	Prepared and Authorised by	Accreditation	Date
Draft Report	Sue Brand, MBS Environmental	Level 2 BPAD Practitioner (36638)	20 October 2023
Final Report			23 October 2023
Revision 1			10 May 2024
Revision 2	Sue Brand, Surefire Environmental		20 October 2025

Disclaimer

This report is subject to copyright, and which rests with Surefire Environmental Pty Ltd and Anstey Road Developments Pty Ltd unless otherwise agreed in writing by the copyright holders.

This report has been prepared for Anstey Road Developments Pty Ltd based on their instructions and information provided by them and therefore may be subject to qualifications which are not expressed. No other person other than those authorised in the distribution list may use or rely on this report without confirmation in writing from Surefire Environmental and Anstey Road Developments Pty Ltd. Surefire Environmental has no liability to any other person who acts or relies upon any information contained in this report once accepted by Anstey Road Developments Pty Ltd.

This Document may be:

- used by:
 - Anstey Road Developments Pty Ltd along with their consultants and contractors
 - the City of Armadale
 - purchasers of Lots in designated bushfire prone areas
- may not be reproduced or transmitted in any form or by any means whatsoever to any person without the written permission of the Copyright holders.

Table of Contents

1.	Proposal Details	1
1.1	Location	1
1.2	Bushfire Prone Status	1
1.3	Document Preparation	2
2.	Environmental Considerations	6
2.1	Environmental Considerations	6
2.2	Native Vegetation – Modification and Clearing	6
2.3	Revegetation and Landscaping.....	6
3.	Bushfire Assessment Results	7
3.1	Broader Landscape Assessment	7
3.2	Contours and Slope.....	8
3.3	Vegetation Classification.....	8
3.3.1	Patch 1: Class D Scrub	8
3.3.2	Patch 2: Class C Shrubland	9
3.3.3	Patch 3: Low Threat Vegetation	11
3.3.4	Patch 4: Non-vegetated Areas	12
3.4	Fire Danger Index (FDI)	16
3.5	Potential Bushfire Impacts	16
3.6	BAL-Assessment.....	16
3.6.1	Stage 7.....	17
3.6.2	Stage 9.....	17
3.6.3	Stage 11.....	17
3.6.4	Stage 12.....	17
3.7	Asset Protection Zone	17
3.8	Shielding	18
4.	Bushfire Hazard Issues	20
5.	Assessment Against Bushfire Protection Criteria	21
5.1	Compliance Table	21
5.2	Additional Bushfire Mitigation Measures	22
6.	Responsibilities for Implementation and Management of the Bushfire Mitigation Measures	23
7.	References	25
Appendix 1: Landscape Plans – Mahala Living Stream POS.....		26

Tables

Table 1:	Simplified BLA Assessment and Justifications.....	7
Table 2:	BAL-analysis.....	16
Table 3:	Compliance Table	21
Table 4:	Bushfire Mitigation Measures	23

Figures

Figure 1: Proposed Subdivision Area	3
Figure 2: Location	4
Figure 3: Site Bushfire Prone Status	5
Figure 4: Current Land Use	6
Figure 5: Class D Scrub	9
Figure 6: Class C Shrubland	10
Figure 7: Low Threat Vegetation	12
Figure 8: Non-vegetated Areas	13
Figure 9: Pre-development Vegetation Classification	14
Figure 10: Post-development Vegetation Classification	15
Figure 11: Indicative BAL-contours and Ratings	19

1. Proposal Details

Anstey Road Developments Pty Ltd commissioned Surefire Environmental to prepare a Bushfire Management Plan (BMP) to support a subdivision application for Stages 7, 9, 11, and 12 of the Mahala Estate, Forrestdale (the Site, Stages 7, 9, 11, and 12) (Figure 1). The development will result in the construction of residential Lots of varying sizes in the northern portion of the broader Mahala Estate, noting that three areas of public open space (POS) will be constructed to the east and north of the Site boundary. The broad aim of the assessment process was to identify potential bushfire risks to future properties along with appropriate management actions when the Site is developed. This document considers current Site conditions and provides an updated assessment to previous BMP versions.

1.1 Location

Stages 7, 9, 11, and 12 are in Forrestdale within the City of Armadale (Figure 2), and are:

- approximately 22 km southeast of the Perth Central Business District (CBD) within the City of Armadale
- approximately 7.8 ha
- are bounded by Anstey Road to the northwest, the future school site to the southwest, public open space (POS) to the southeast, and POS and MacFarlane Road to the northeast.

1.2 Bushfire Prone Status

The Site is located within an Area 2 bushfire prone area as designated by the Fire and Emergency Services Commissioner, Office of Bushfire Risk Management (OBRM), within the Department of Fire and Emergency Services (Figure 3) due to the presence of vegetated areas that were within the Site prior to the development commencing, as well as those in surrounding areas in vegetated Lots that will be retained to southeast, and north of MacFarlane Rd. Accordingly, there is a requirement for landowners to undertake an assessment to determine the risks and identify appropriate management strategies such that the development does not increase the inherent bushfire risk. Portions of the site that are located within 100 m of vegetation designated as being bushfire prone necessitate the need for a bushfire attack level assessment (BAL-assessment) and if required, assigning a BAL-rating that will inform appropriate construction standards as per *AS 3959:2018 Construction of Buildings in Bushfire Prone Areas (AS 3959:2018)*.

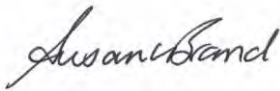
The BAL assessment component of this document considers current and projected site conditions (i.e. vegetation classification pre- and post-development), along with the provisions of *State Planning Policy 3.7 Bushfire (SPP3.7)* (Department of Planning, Lands and Heritage (DPLH)), and the Western Australian Planning Commission (WAPC) (2024b) and *Planning for Bushfire Guidelines for the Implementation of State Planning Policy 3.7 Bushfire (the Guidelines)* (Department of Planning, Lands and Heritage and the Western Australian Planning Commission, 2024a).

1.3 Document Preparation

Sue Brand (Surefire Environmental), an accredited Level 2 Bushfire Planning and Design (BPAD) practitioner with the Fire Protection Association Australia, has prepared this document using a Method 1 approach. Activities involved with its preparation included:

- assessing the vegetation type and class present within and adjacent to the proposed development site using descriptions provided in AS 3959:2018
- considering the bushfire hazard based on the vegetation classes present around the Site
- determining BAL-ratings for each Lot based on the expected post-development vegetation classification
- suggesting management strategies that will be implemented based on current and projected site considerations.

Signed:



Date: 20 October 2025

Accreditation Number: BPAD36638

Accreditation Expiry Date: 30 April 2026



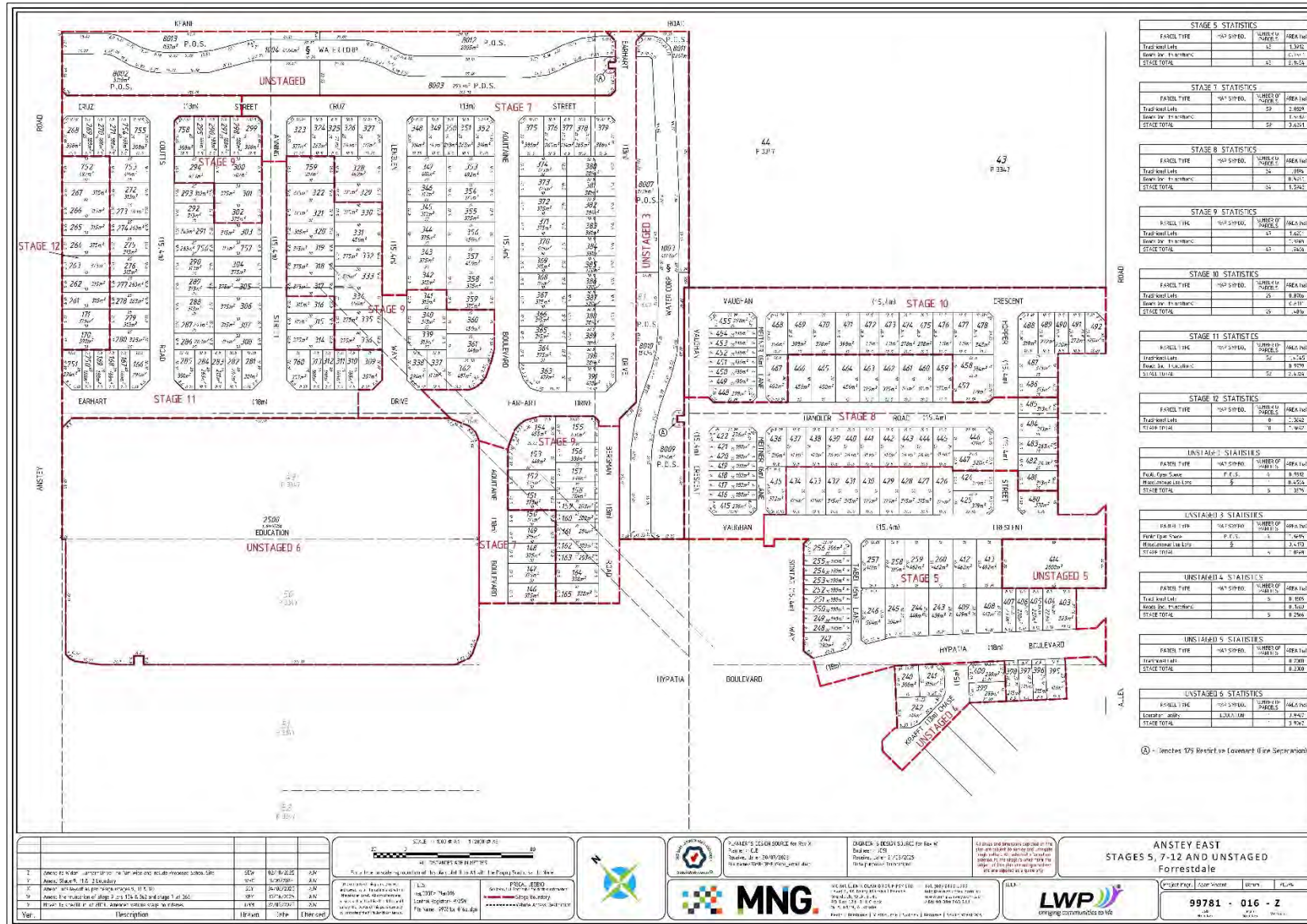


Figure 1: Proposed Subdivision Area

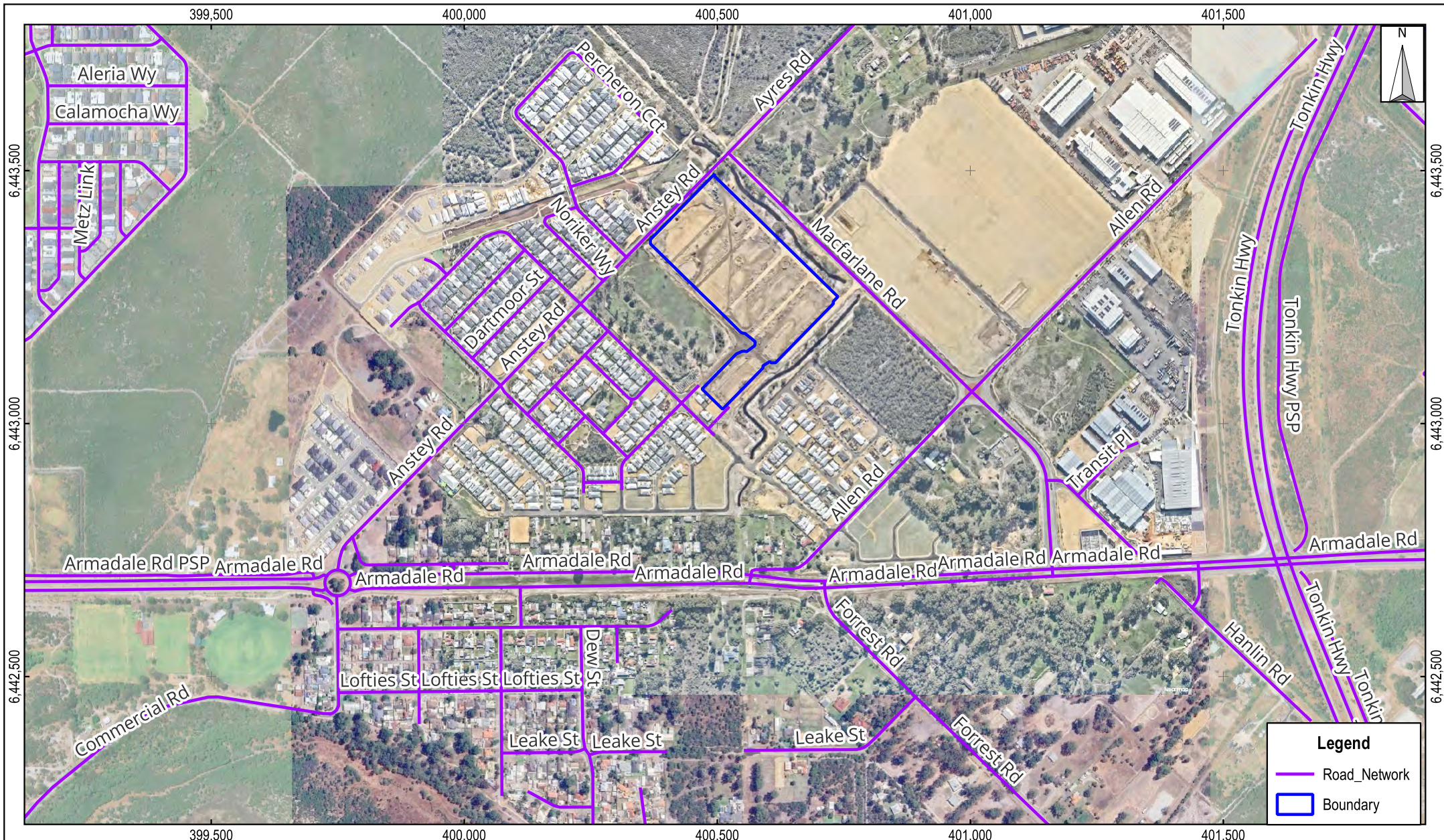


Figure 2
Location

Bushfire Management Plan
Stages 7, 9, 11 and 12 Mahala Estate, Forrestdale
Anstey Road Developments Pty Ltd

Scale: 1: 10,000
Original Size: A4
Aerial Imagery: NearMap July 2025
Grid: GDA94 / MGA zone 50 (EPSG:28350)

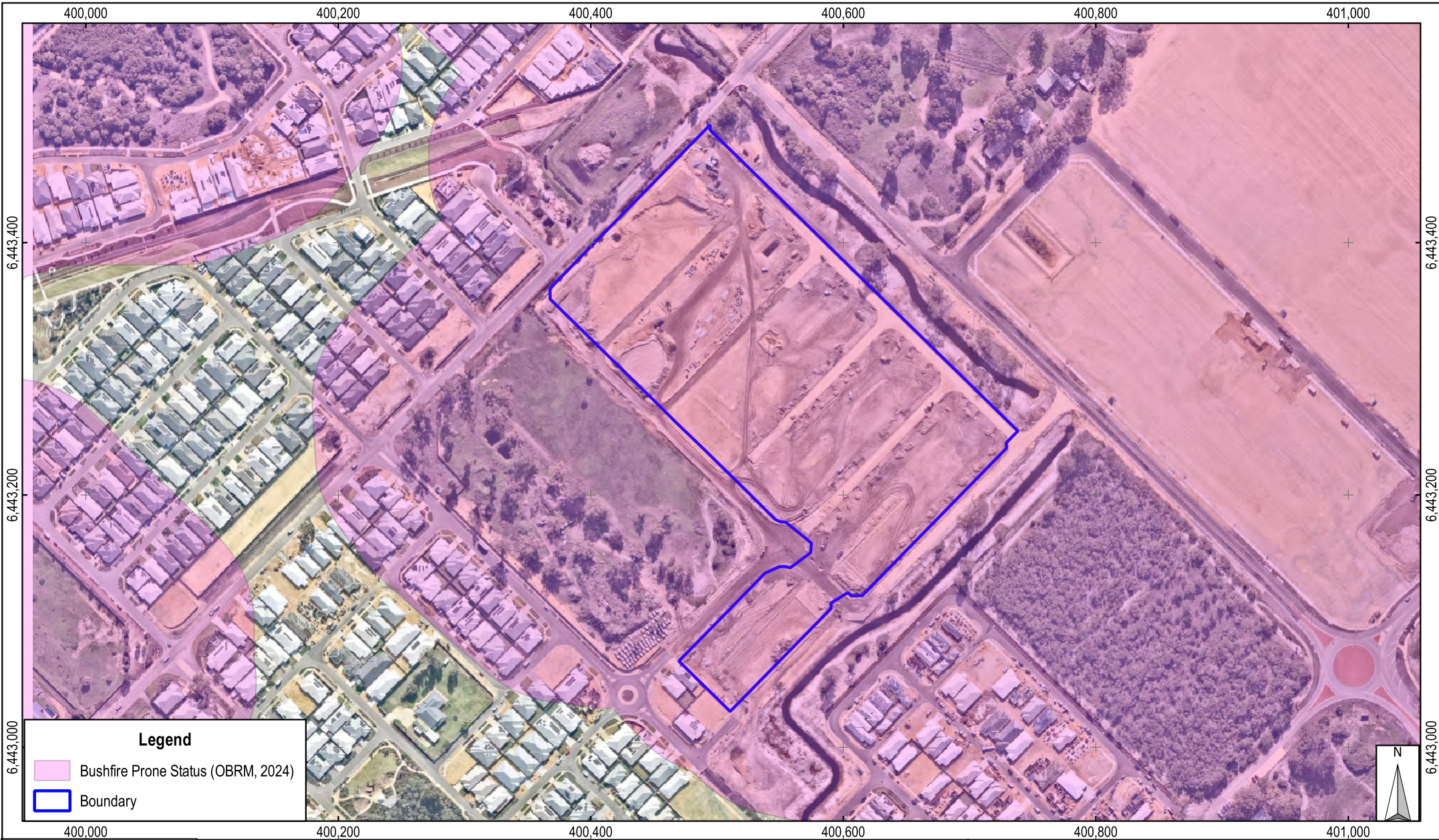
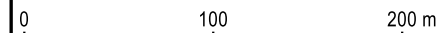


Figure 3

Site Bushfire Prone Status

Bushfire Management Plan
 Stages 7, 9, 11 and 12 Mahala Estate, Forrestdale
 Anstey Road Developments Pty Ltd

Scale: 1: 4,000
 Original Size: A4
 Aerial Imagery: NearMap July 2025
 Grid: GDA94 / MGA zone 50 (EPSG:28350)



2. Environmental Considerations

Environmental considerations were considered by others during previous planning phases.

2.1 Environmental Considerations

The overall Mahala development site was previously zoned rural residential land, with the common use being horse-related activities. These land uses mean that there were few environmental values present prior to development progressing, except for the retained bushland within Lots 43 and 44 at the intersection of Allen and MacFarlane Roads that will be retained in perpetuity (**Error! Reference source not found.**).

Accordingly, within the Stages 7, 9, 11, and 12 boundaries, there are no:

- Bush Forever Sites, with the closest being Site 342 Anstey/Keane Dampland and Adjacent Bushland, Forrestdale across Anstey Road to the north/northwest
- wetlands or waterways, with the closest Conservation Category Wetlands being a series of Damplands associated with Bush Forever Site 342
- no known presence of threatened or priority listed flora, fauna, or ecological communities.

2.2 Native Vegetation – Modification and Clearing

Development within Stages 7, 9, 11, and 12 is well progressed, thus is cleared of vegetation (Figure 4, Figure 2), including within the planned POS areas to the east and north of the Site ahead of landscaping and restoration.



Figure 4: Current Land Use

2.3 Revegetation and Landscaping

Landscaping will occur in POS 3 up to approximately 100 m beyond the Stage 10 boundary to the east to meet the definition of low threat vegetation as defined by Clause 2.2.3.2 (f) of AS 3959:2018, and revegetation will occur within the remainder of POS 3 and POS 4 to the north that will restore a Class C Shrubland vegetation classification, as per the landscape plan approved by the City of Armadale dated 22 July 2024 (Emerge Associates, 2024). The planned landscaping and revegetation has been considered in this BMP. A copy of the landscape plans for POS 3 and 4 is provided in Appendix 1.

3. Bushfire Assessment Results

This section outlines the outcomes of the bushfire assessment process.

3.1 Broader Landscape Assessment

As the Site is located within an area designated as Area 2 on the Map of Bushfire Prone Areas (OBRM, 2024) (Figure 3), a broader landscape assessment (BLA) was required. Using the point scoring system included in Table 3 of Appendix A.1 Broader Landscape Assessment of the *Guidelines*, a simplified BLA was undertaken, with a summary of results provided in Table 1 and shown in Figure 1, Figure 2, and Figure 3.

Table 1: Simplified BLA Assessment and Justifications

Criteria	Points	Justification
Proximity of the planning proposal to a suitable destination is < 1 km .	1	<ul style="list-style-type: none"> Stages 7, 9, 11, and 12 are among the final stages to be developed within the broader Mahala development area and is the subject of existing planning approvals. The distance to existing development and a suitable destination in the event of a bushfire is less than 1 km (Figure 1, Figure 2).
The road pattern from the planning proposal to a suitable destination is simple and/or direct (limited intersections) .	1	<ul style="list-style-type: none"> When developed, the planned road network will provide a range of egress options, including to northeast to Macfarlane Rd, northwest to Anstey Rd, southeast and southwest to Earhart Dr and Hypatia Bvd, with Bergman Rd and Aquitaine Bvd to the southwest also providing access/egress options (Figure 2).
The predominant vegetation pattern is cleared vegetation (e.g. clearing for residential zoned urban lots) .	1	<ul style="list-style-type: none"> Based on the current planning approvals and Site conditions, the vegetation pattern is non-vegetated (Figure 2). The vegetation within the commercial area across MacFarlane Rd to the northeast has been cleared to enable the development within that location to proceed. The school site to the across Earhart Dr to the southwest is maintained in a low threat condition as defined by <i>AS 3959:2018</i> through regular slashing of grass, with trees previously thinned. Slashing will occur once the ground dries out sufficiently after the winter and spring rains experienced during 2025.

Criteria	Points	Justification
Exposure of the planning proposal to an identified external bushfire hazard (excluding Class G Grassland) is from nil or one aspect only .	2	<ul style="list-style-type: none"> The vegetation to the southeast across Earhart Dr and to the northeast within POS 4 based on its restoration to Class C Shrubland will be the locations that determine the bushfire risk for the Site and BAL-ratings for Lots will 100 m of that classified vegetation (refer Section 3.3).
Total Points	5	Broader Landscape Type A

3.2 Contours and Slope

Stages 7, 9, 11, and 12 and the surrounding areas are located on flat land, thus is slope that has been applied to the BAL-assessment component of this document; note that a site contour diagram has not been provided.

3.3 Vegetation Classification

Vegetation on and within 150 m of the Site was assessed during the several visits to the Site, with the most recent occurring on 01 September 2025, using descriptions provided in Table 2.3 and Figure 2.4 of *AS 3959:2018*. The topography of the Site means varying growing zones, with Class B Woodland, Class C Shrubland, Class D Scrub, and Class G Grassland present in patches, as well as being present in locations to the east and west. Each vegetation class is discussed and shown in Figure 5, Figure 6, Figure 7, and Figure 8. The pre-development vegetation classification for the Site is provided in Figure 9, with the expected post-development classification shown in Figure 10.

3.3.1 Patch 1: Class D Scrub

Class D Scrub is characterised by vegetation 2 – 4 m with a continuous canopy from ground level. This vegetation will represent an ongoing bushfire risk due to its presence in (Figure 5):

- retained bushland in Lots 43 and 44 at the intersection of Allen and MacFarlane Roads
- retained bushland in private property across MacFarlane Rd to the northeast
- a small patch in the Solaris subdivision across Anstey Rd to the northwest that is approximately 100 m from the Site.

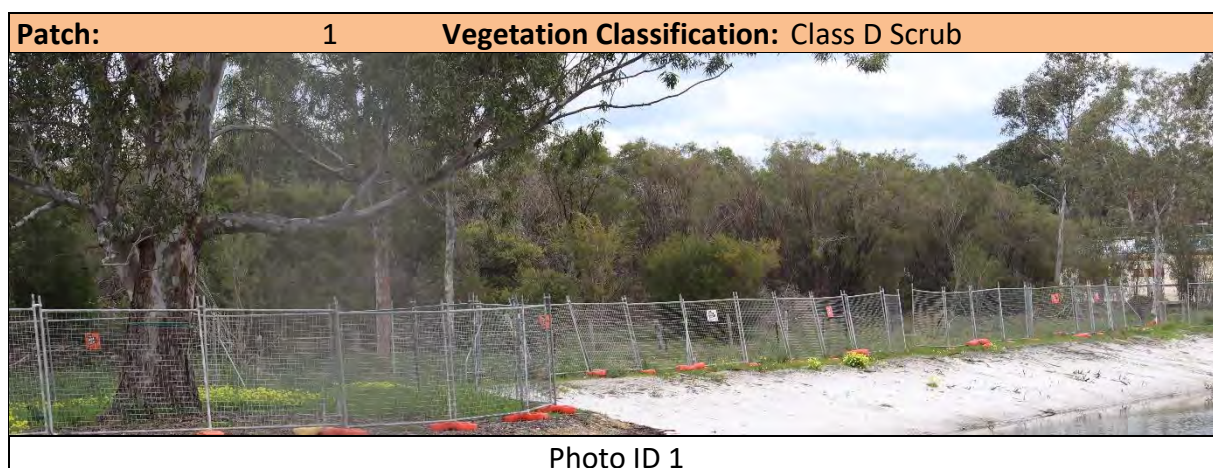




Photo ID 2



Photo ID 3

Figure 5: Class D Scrub

3.3.2 Patch 2: Class C Shrubland

Class C Shrubland is characterised by low shrubs to 2 m and is present in the conservation area that is located in what was the Keane Rd road reserve across Anstey Rd to the north of the site, noting that the associated buffer applicable to this area will be revegetated to create Class C Shrubland. A small patch of this vegetation class is also present across Anstey Road to the northeast and will remain an ongoing bushfire risk (Figure 6).

As indicated in Section 2.3 **Error! Reference source not found.**, Class C Shrubland will be restored within the norther portion of POS 3 and in POS 4 to north, with small amenity areas also planned, as per the approved landscaping plans (Appendix 1). When it reaches maturity, the planned Class C Shrubland in POS 4 will represent an ongoing bushfire risk and has been considered during the BAL assessment process.



Figure 6: Class C Shrubland

3.3.3 Patch 3: Low Threat Vegetation

Vegetation may be considered low threat due to characteristics including flammability, moisture content, or fuel load, with examples including managed parkland/reserve areas, grassland maintained in a minimal fuel load through cropping to 20 mm or less, nature strips, wind breaks, market gardens, orchards, and playing fields. These locations are subject to exclusion clause 2.2.3.2 (f) of AS 3959:2018. Low-threat vegetation is present in (Figure 7):

- trees within the school site along Hypatia Bvd that were previously thinned during the development of previous Stages
- planned landscaped POS areas that will be maintained in a low-fuel state in perpetuity within the Mahala and Solaris development sites
- grassy areas within what will become the school site where slashing to 100 mm occurs regularly to ensure no nearby Lots will have a temporary BAL rating; slashing is due to undertaken before summer 2025 after the ground has dried sufficiently after the winter and spring rains
- maintained rural residential property to the north of MacFarlane Rd.



Photo ID 7



Photo ID 8



Photo ID 9

Figure 7: Low Threat Vegetation

3.3.4 Patch 4: Non-vegetated Areas

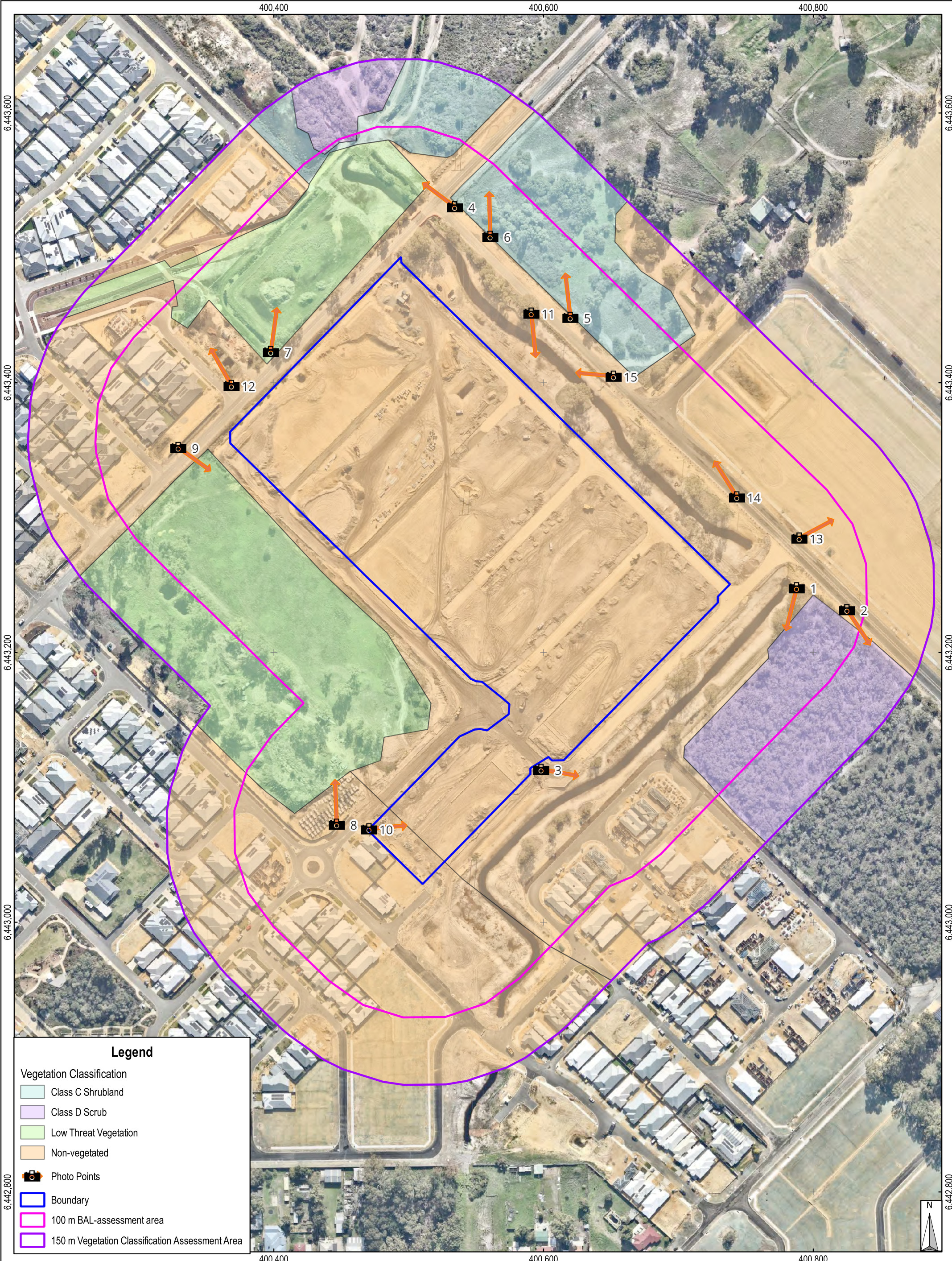
Non-vegetated areas are subject to exclusion clause 2.2.3.2 (e), with those within and close to the Site including (Figure 8):

- roads and footpaths
- cleared land
- the stream associated with POS 3 and 4
- existing development in preceding development stages.

Patch:	4	Exclusion Clause:	2.2.3.2 (e)
	Photo ID 10		Photo ID 11



Figure 8: Non-vegetated Areas



Legend

- Vegetation Classification
 - Class C Shrubland
 - Class D Scrub
 - Low Threat Vegetation
 - Non-vegetated
- Photo Points
- Boundary
- 100 m BAL-assessment area
- 150 m Vegetation Classification Assessment Area

Figure 9

Pre-development Vegetation Classification

Bushfire Management Plan
 Stages 7, 9, 11, and 12, Mahala Estate, Forrestdale
 Anstey Road Developments Pty Ltd

Scale: 1: 2,500
 Original Size: A3
 Aerial Imagery: NearMap July 2025
 Grid: GDA94 / MGA zone 50 (EPSG:28350)

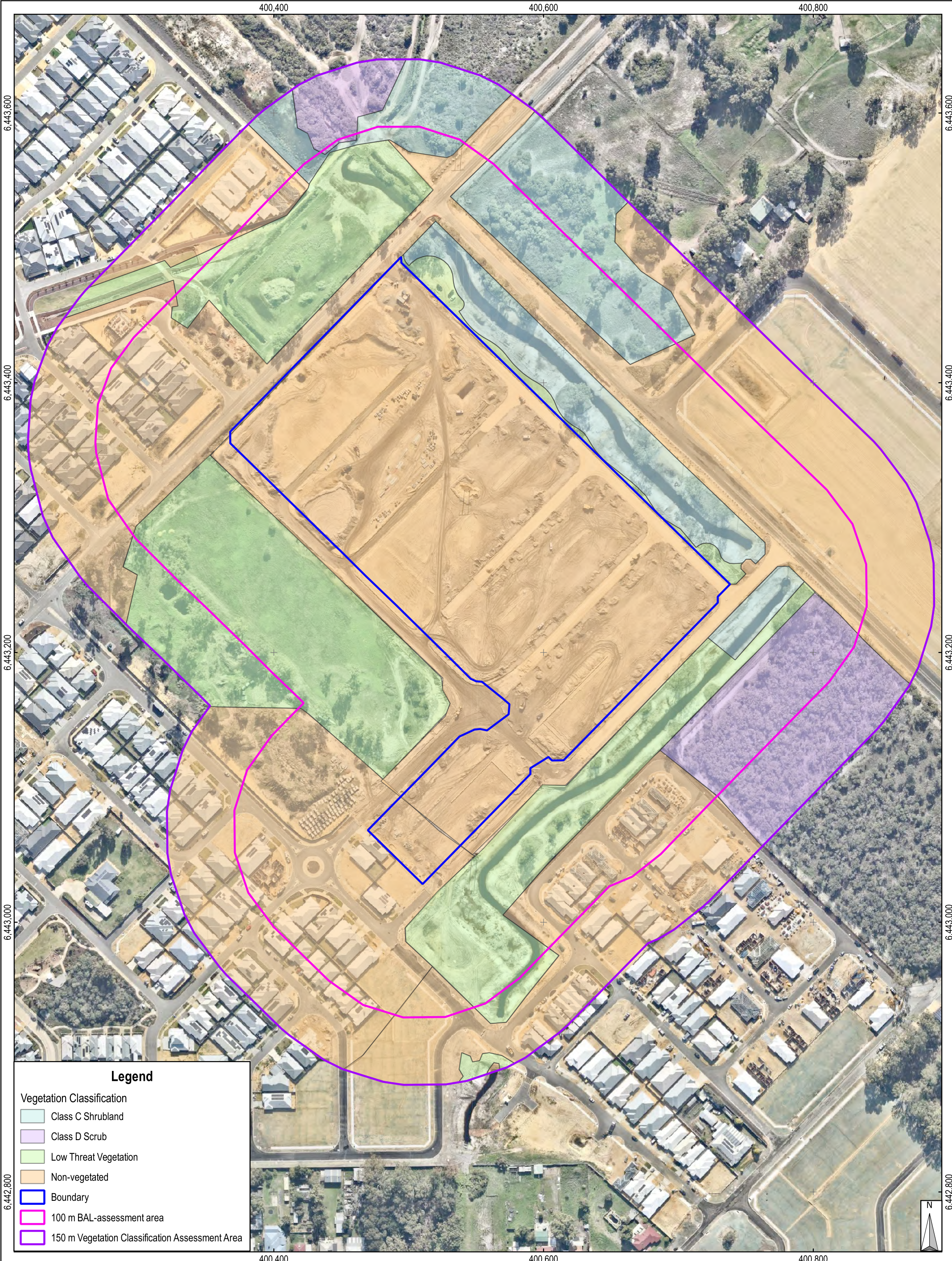


Figure 10

Post-development Vegetation Classification

Bushfire Management Plan
 Stages 7, 9, 11, and 12, Mahala Estate, Forrestdale
 Anstey Road Developments Pty Ltd

Scale: 1: 2,500
 Original Size: A3
 Aerial Imagery: NearMap July 2025
 Grid: GDA94 / MGA zone 50 (EPSG:28350)



3.4 Fire Danger Index (FDI)

The Fire Danger Index for this site is FDI 80, as documented in Table 2.4.3 of AS 3959:2018 and which is the nominated FDI for Western Australia.

3.5 Potential Bushfire Impacts

Potential bushfire impacts within the Site include smoke, ember attack, and radiant heat, with the BAL-analysis provided in Table 2. The maximum BAL-rating for Lots will be BAL-19 (Figure 10, Figure 11), indicating that an acceptable asset protection zone is achievable.

Table 2: BAL-analysis

Patch	Vegetation Class	Slope	Separation Distance (m)	BAL-rating
1a	Class D Scrub – Lots 43 and 44	Flat	50	BAL-12.5
1b	Class D Scrub – across Anstey Rd	Flat	90	BAL-12.5
2a	Class C Shrubland – Living Stream	Flat	14	BAL-19
2b	Class C Shrubland – across MacFarlane Rd	Flat	75	BAL-12.5
2c	Class C Shrubland – across Anstey Rd	Flat	95	BAL-12.5
3a	Low Threat Vegetation – School Site	N/A	Exclusion Clause 2.2.3.2 (f)	BAL-Low
3b	Low Threat Vegetation – Solaris POS across Anstey Rd	N/A	Exclusion Clause 2.2.3.2 (f)	BAL-Low
3c	Low Threat Vegetation – southern portion of POS 3 and nominated areas of POS 4	N/A	Exclusion Clause 2.2.3.2 (f)	BAL-Low
4a	Non-vegetated Areas – within Site boundary and Mahala Estate	N/A	Exclusion Clause 2.2.3.2 (e)	BAL-Low
4b	Non-vegetated Areas – across MacFarlane Rd	N/A	Exclusion Clause 2.2.3.2 (e)	BAL-Low
4c	Non-vegetated Areas – Solaris Estate across Anstey Rd	N/A	Exclusion Clause 2.2.3.2 (e)	BAL-Low

3.6 BAL-Assessment

The Lot layout for the Site is known, so it is possible to determine BAL ratings for each Stage and these are shown in Figure 11. The planned restoration to Class C Shrubland in POS areas 3 and 4 combined with a changed design has meant revised BAL ratings for the those Lots within 100 m of those locations.

BAL ratings for each stage documented in this BMP are outlined in the following Sections, noting that where the BAL-19 contour extends into a Lot boundary by more than 2 m, the Lot has been assigned a BAL-19 rating, and a BAL-12.5 rating where the contour extends into the Lot less than 2 m as it is expected a minimum 2 m setback will apply. Note that when the locations of planned dwellings are known for the BAL-19 rated Lots, if they totally avoid the BAL-19 contours, then a BAL-12.5 rating may be possible.

Based on the above information, the assessment process associated with the preparation of this BMP indicates that the bushfire risk for the site is manageable, with several Lots requiring a BAL-rating when later detailed design for the subdivision is carried out during future planning phases.

3.6.1 Stage 7

Some Lots within Stage 7 front the planned Class C Shrubland that will be restored within POS areas 3 and 4, along with the vegetation that will be retained in Lot 44 to the southwest, will require a BAL rating, with ratings as follows:

- **BAL-Low:** Lots 146 – 150, 342, 358, 359, and 364, noting that Lot 364 will require a 1.5 m rear Lot boundary to ensure the BAL-Low rating is achieved
- **BAL-12.5:** Lots 323, 328, 329, 343 – 347, 353 – 357, 363 – 374, 378, and 382 – 391
- **BAL-19:** 324 – 327, 348 – 352, 375 – 377, and 379 – 381
- No Lots will be rated BAL-29
- No Lots will be rated BAL-40 or BAL-FZ.

3.6.2 Stage 9

Some Lots within Stage 9 that front the planned Class C Shrubland that will be restored within POS area 4, will require a BAL rating, with ratings as follows:

- **BAL-Low:** Lots 151 – 165, 317, 318, 333 – 341, and 360 – 362
- **BAL-12.5:** Lots 294, 296 – 302, 319 – 322, 330 – 332, and 759
- **BAL-19:** Lots 295, and 758
- No Lots will be rated BAL-29
- No Lots will be rated BAL-40 or BAL-FZ.

3.6.3 Stage 11

Some Lots within Stage 11 that front the planned Class C Shrubland that will be restored within POS area 4, will require a BAL rating, with ratings as follows:

- **BAL-Low:** Lots 166 – 169, 276 – 280, 282 – 285, 309 – 316, 750, 751, and 760
- **BAL-12.5:** Lots 270 – 275, 291 – 293, and 756
- **BAL-19:** Lots 268 and 269
- No Lots will be rated BAL-29
- No Lots will be rated BAL-40 or BAL-FZ.

3.6.4 Stage 12

Some Lots within Stage 12 that front the planned Class C Shrubland that will be restored within POS area 4, will require a BAL rating, with ratings as follows:

- **BAL-Low:** Lots 170 – 171, and 261 – 263
- **BAL-12.5:** Lots 264 – 267, and 752
- No Lots will be rated BAL-19
- No Lots will be rated BAL-29
- No Lots will be rated BAL-40 or BAL-FZ.

3.7 Asset Protection Zone

The Asset Protection Zone (APZ) for the Site is the area that provides the separation distance between the edge of the classified vegetation and building walls, with the preferred width of the APZ being 100 m. For locations where a 100 m APZ width cannot be achieved, a reduced APZ can be implemented when a BAL-rating is determined for the building, as will be the case for some Lots that are the subject of this BMP, and which will be confirmed during future planning phases. The reduced APZ commences at the junction of the BAL-40 and BAL-29 zones, or the junction of the orange and yellow zones shown in Figure 11, and will extend to

the building walls which is the point where the potential radiant heat impact of a bushfire does not exceed 29 kW/m².

3.8 Shielding

Clause 3.5 of *AS 3959:2018* allows for a reduction in the nominated construction standard for a building in bushfire prone area where the elevation is not exposed to the source of the bushfire attack, noting that the reduction in building standard cannot reduce below BAL-12.5. As some Lots will have a BAL-19 rating (Figure 11), the shielding provisions of Clause 3.5 may apply.

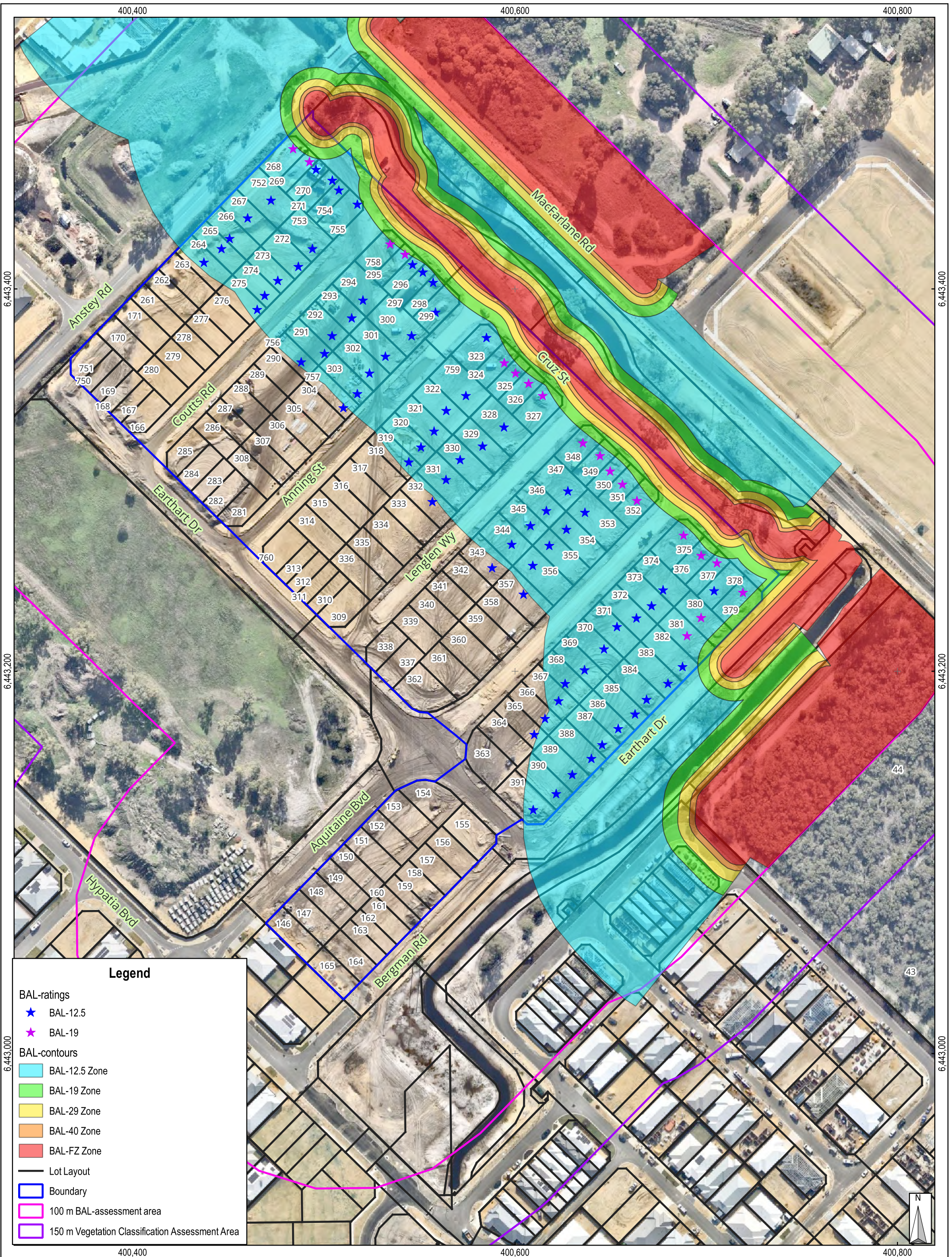


Figure 11

Indicative BAL-contours and Ratings

Bushfire Management Plan
 Stages 7, 9, 11, and 12 Mahala Estate, Forrestdale
 Anstey Road Developments Pty Ltd

Scale: 1: 1,750
 Original Size: A3
 Aerial Imagery: NearMap July 2025
 Grid: GDA94 / MGA zone 50 (EPSG:28350)

0 25 50 m

4. Bushfire Hazard Issues

A review of the environmental considerations, current vegetation classification (Figure 9) and the expected post-development vegetation classification (Figure 10) indicated that there were no impediments to development of Stages 7, 9, 11, and 12. Additionally, as a concept plan has been prepared, it was possible to model the indicative BAL-contours and ratings for the Site (Figure 11) based on the expected post-development vegetation classification and confirm that Stages 7, 9, 11, and 12 are suitable for development and will comply with the bushfire protection criteria.

5. Assessment Against Bushfire Protection Criteria

Appendix B of the *Guidelines* (DPLH and WAPC, 2024a) provides details of the acceptable bushfire protection solutions that can be used to demonstrate how a location can be developed in bushfire prone areas.

5.1 Compliance Table

The compliance table focuses on ensuring that the subdivision design complies with Element 2: Siting and Design, Element 3: Vehicular Access, and Element 4: Water. Outcomes of how the Site will comply are provided in Table 3 with all compliance requirements able to be achieved.

Table 3: Compliance Table

Bushfire Protection Criteria	Method of Compliance – Method 1		Proposed Bushfire Management Strategies
	Acceptable Solutions		
Element 1: Location	A1.1a	Broader Landscape Type A	BLA outcome as described in Section 3.1 indicates that the Site is a Broader Landscape Type A and is compliant with Element 1: Location.
Element 2: Siting and Design	A2.1	Siting and Design	The subdivision design ensures a maximum BAL-rating of BAL-19 for the Site can be achieved with the implementation of suitable management strategies such as providing perimeter roads and patches of low threat vegetation to ensure that the maximum BAL-rating for some Lots is BAL-19. Accordingly, the development will comply with siting and design requirements of the guidelines (Figure 11).
	A2.2	Clearing of Native Vegetation	The Site has been cleared of native vegetation, with the restoration of Class C Shrubland within the northern portion of POS 3 and in POS 4 being considered during preparation of this document (Figure 9, Figure 10).

Bushfire Protection Criteria	Method of Compliance – Method 1		Proposed Bushfire Management Strategies
	Acceptable Solutions		
Element 3: Vehicular Access	A3.1	Public Roads	The construction public roads associated with the subdivision is well progressed, with construction in accordance with the technical requirements outlined in Column 2, Area 1 of Table 10 on page 103 of the <i>Guidelines</i> . Road design was approved by the City of Armadale prior to construction commencing.
	A3.2	Access Roads	Access roads provide access/egress options to several locations within and beyond the Site, with roads leading to Anstey Rd to the northwest, MacFarlane Rd to the northeast, Earhart Dr to the south and east, and Hypatia Bvd to the south (Figure 1, Figure 11).
	A3.3a	No-through Roads	N/A – no no-through roads are planned.
	A3.3b	No-through Road Requirements	N/A – no no-through roads are planned.
	A3.5b	Fire Service Access Routes	A fire service access is not required, with access available through the planned internal road network.
Element 4: Water	A4.1	Water Supply for Structure Plans	The Site is in an area where a reticulated water supply will be available. The water supply and hydrant design underwent review and endorsement by the Water Corporation prior to construction commencing.

5.2 Additional Bushfire Mitigation Measures

No additional bushfire mitigation measures other than those outlined in this BMP will be required.

6. Responsibilities for Implementation and Management of the Bushfire Mitigation Measures

Required bushfire mitigation measures that will be implemented and maintained by the Developer until the Site is developed, and Lots are sold are provided in Table 4. Also provided are an indication of the responsibilities of future lot and landowners and the maintenance requirements associated with the various responsibilities.

Table 4: Bushfire Mitigation Measures

Item	Mitigation Measure	Maintenance
Landowner/Developer Prior to Sale or Occupancy		
1	The proposed subdivision design is reviewed at future planning phases to ensure the bushfire risk remains manageable.	As required at future planning phases and/or changes in the indicative design occur.
2	When landscape plan are prepared or adjusted, they will be reviewed to identify implications for bushfire hazard/risk within the development, noting that designs will also be reviewed and endorsed by the City of Armadale	When landscape designs are prepared or changes to their design occur.
3	The design and installation of roads will be in accordance with requirements specified in Table 6, Column 1 on page 76 of the Guidelines, with approval required from the City of Armadale before installation can commence.	As required during various future planning approval phases.
4	When development of the Site progresses, a 50 m low-fuel zone will be installed around active stages to prevent temporary BAL-ratings on Lots under construction.	As required to ensure grassed areas remain in a low fuel state as defined by AS 3959:2018.
5	If required, undertake slashing of any long grass or other low vegetation to 50 mm and other weed control to reduce fuel load within POS areas and low fuel zones.	As required to ensure grassed areas remain in a low fuel state as defined by AS 3959:2018.
6	Comply with the City of Armadale's annual fire hazard reduction notice.	As per the requirements of the City of Armadale annual fire hazard reduction notice.
7	Prepare a BMP compliance report to demonstrate that the relevant bushfire management measures have been implemented during subdivisional works to deliver compliance.	As required at each appropriate planning stage.

Item	Mitigation Measure	Maintenance	
Developer – Prior to Issue of Certificate of Titles for New Lots			
No.	Implementation Action	Local Government Clearance	Bushfire Consultant Clearance
1	The proposed subdivision design is reviewed at future planning phases to ensure the bushfire risk remains manageable.	✓	✓
2	Landscape plans will be reviewed to identify any implications for bushfire hazards/risks to the development.	✓	✓
3	The design and installation of roads will be in accordance with requirements specified in Table 6, Column 1 on page 76 of the Guidelines, with approval required from the City of Armadale before installation can commence.	✓	✓
4	When development of the Site progresses, a 50 m low-fuel zone will be installed around active stages to prevent temporary BAL-ratings on Lots under construction.		✓
5	If required, undertake slashing of any long grass or other low vegetation to 50 mm and other weed control to reduce fuel load within POS areas and low fuel zones.		✓
6	Comply with the City of Armadale's annual fire hazard reduction notice.	✓	✓
7	Prepare a BMP compliance report to demonstrate that the relevant bushfire management measures have been implemented during subdivisional works to deliver compliance.		✓

7. References

AS 3959:2018 Construction of Buildings in Bushfire-Prone Areas, (2018), Standards Australia, New South Wales.

City of Armadale, (2024), *Conditional Endorsement – Proposed Landscaping and Irrigation Works – Mahala Stage 6 Living Stream POS*, communication to Emerge Associates.

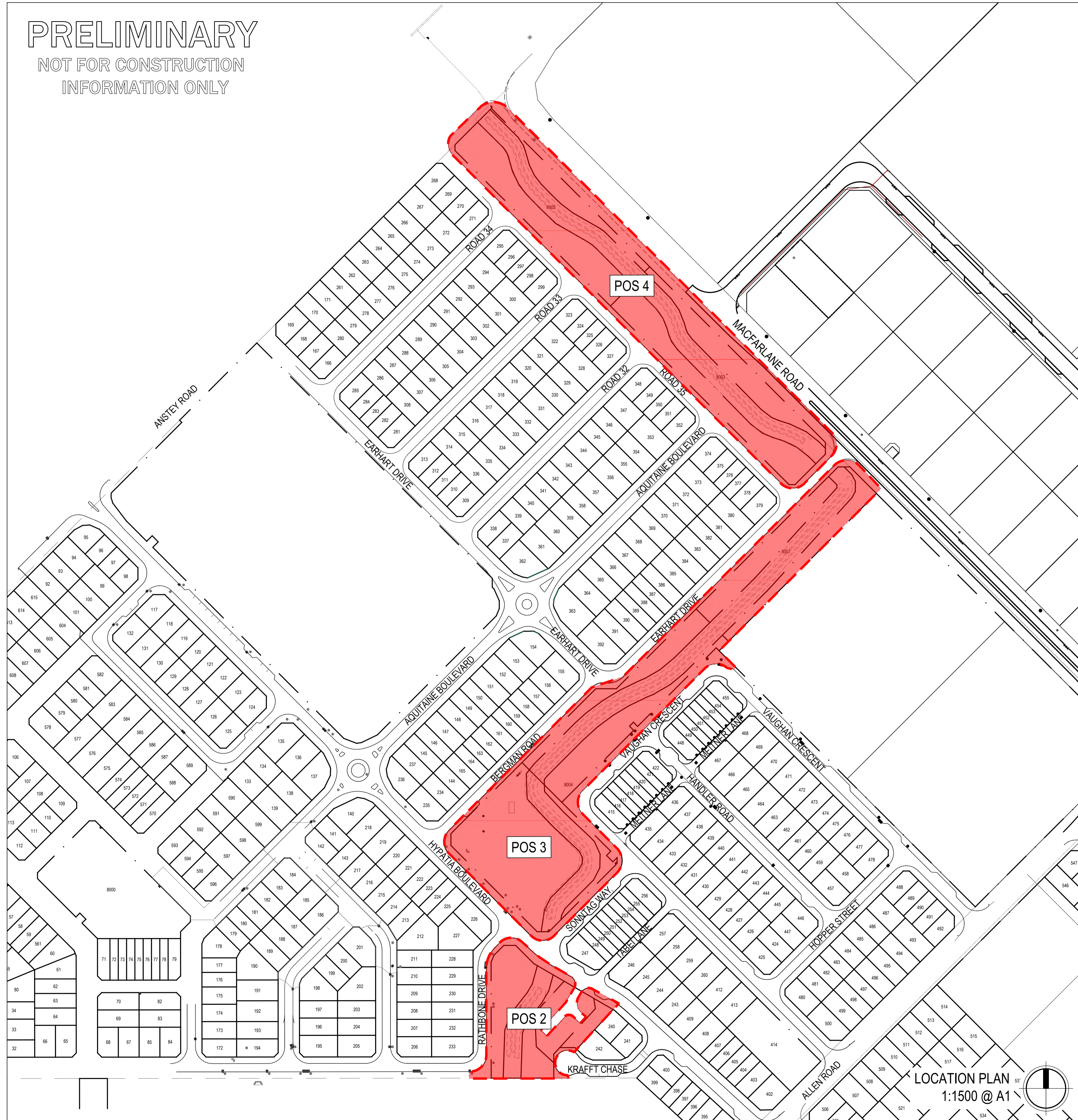
Department of Planning, Lands and Heritage (DPLH) and the Western Australian Planning Commission (WAPC), (2024a), *Planning for Bushfire Guidelines for the Implementation of State Planning Policy 3.7 Bushfire (the Guidelines)*, Western Australian Planning Commission, Perth, Western Australia.

Department of Planning and Western Australian Planning Commission, (2024b) *State Planning Policy 3.7 Bushfire (SPP 3.7)*, Western Australian Planning Commission, Perth Western Australia.

Emerge Associates, (2024) *Mahala Forrestdale Living Stream POS Landscape and Irrigation Works*, unpublished plans prepared for Anstey Road Developments Pty Ltd.

Appendix 1: Landscape Plans – Mahala Living Stream POS

PRELIMINARY
NOT FOR CONSTRUCTION
INFORMATION ONLY



MAHALA, FORRESTDAL LIVING STREAM POS

LANDSCAPE CONTRACT: ARF08
LANDSCAPE & IRRIGATION WORKS

CLIENT: ANSTEY ROAD DEVELOPMENTS PTY LTD

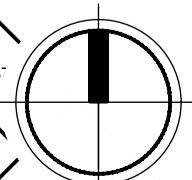
ISSUE FOR: **APPROVAL**

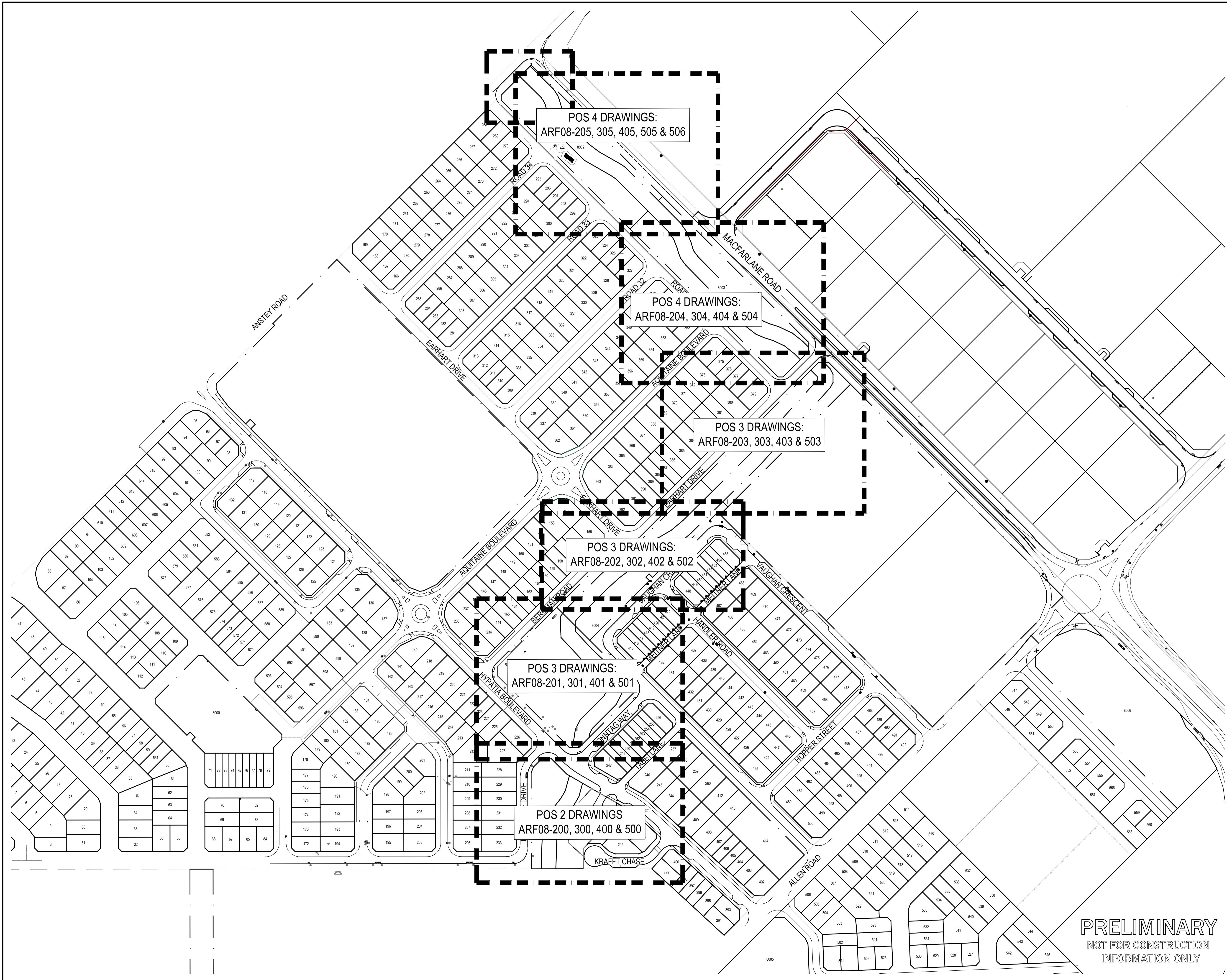
DATE: **MAY 2024**

Sheet List Table

SHEET	REVISION	TITLE
ARF08-000	C	COVER PAGE
ARF08-100	C	OVERALL PLAN
ARF08-200	1	TREE RETENTION & REMOVAL PLAN 01
ARF08-201	1	TREE RETENTION & REMOVAL PLAN 02
ARF08-202	1	TREE RETENTION & REMOVAL PLAN 03
ARF08-203	1	TREE RETENTION & REMOVAL PLAN 04
ARF08-204	1	TREE RETENTION & REMOVAL PLAN 05
ARF08-205	1	TREE RETENTION & REMOVAL PLAN 06
ARF08-300	B	GRADING PLAN 01
ARF08-301	C	GRADING PLAN 02
ARF08-302	C	GRADING PLAN 03
ARF08-303	C	GRADING PLAN 04
ARF08-304	C	GRADING PLAN 05
ARF08-305	C	GRADING PLAN 06
ARF08-400	B	FINISHES PLAN 01
ARF08-401	C	FINISHES PLAN 02
ARF08-402	C	FINISHES PLAN 03
ARF08-403	C	FINISHES PLAN 04
ARF08-404	C	FINISHES PLAN 05
ARF08-405	C	FINISHES PLAN 06
ARF08-500	B	PLANTING PLAN 01
ARF08-501	C	PLANTING PLAN 02
ARF08-502	C	PLANTING PLAN 03
ARF08-503	C	PLANTING PLAN 04
ARF08-504	C	PLANTING PLAN 05
ARF08-505	C	PLANTING PLAN 06
ARF08-506	C	PLANTING PLAN 07
ARF08-800	C	CROSS SECTIONS 01
ARF08-801	C	CROSS SECTIONS 02
ARF08-802	C	CROSS SECTIONS 03

LOCATION PLAN
1:1500 @ A1





STANDARD NOTES

- 1. SET OUT & DIMENSIONS.** THE CONTRACTOR SHALL SET OUT ALL PATHS, WALLS, SURFACES AND ELEMENTS EITHER ON OR OFF SITE PRIOR TO CONSTRUCTION AND SHALL OBTAIN THE SUPERINTENDENT'S SET OUT APPROVAL PRIOR TO WORKS COMMENCING. WRITTEN DIMENSIONS SHALL TAKE PRECEDENCE OVER SCALE. CHECK ALL DRAWING SCALES IN CONJUNCTION WITH DRAWING SIZE.
- 2. SERVICES & SITE ASSETS.** THE CONTRACTOR SHALL INVESTIGATE THE NATURE AND LOCATION OF ALL EXISTING SERVICES AND RETAINED SITE ASSETS AFFECTED BY THEIR WORKS. FAILURE TO TAKE DUE CARE SHALL NOT LIMIT THE CONTRACTOR'S LIABILITIES.
- 3. REFERENCE.** THE CONTRACTOR SHALL REFER TO ALL CONTRACT DOCUMENTS, THE SPECIFICATION AND DRAWINGS PRIOR TO AND DURING THE WORKS.
- 4. DISCREPANCIES.** NOTIFY SUPERINTENDENT OF ANY SUSPECTED DISCREPANCIES OR ERRORS PRIOR TO THE ORDERING OF AFFECTED MATERIALS AND OR CONSTRUCTION OF AFFECTED WORKS.
- 5. RELEVANT STANDARDS.** THE CONTRACTOR SHALL UNDERTAKE ALL WORKS AND WORKS IN ACCORDANCE WITH CURRENT INDUSTRY BEST PRACTICE AND ALL RELEVANT AUSTRALIAN STANDARDS.
- 6. SERVICE LOCATOR.** THE CONTRACTOR SHALL UNDERTAKE A DIAL BEFORE YOU DIG PROCESS PRIOR TO COMMENCING WORKS ON SITE. THE CONTRACTOR SHALL ENGAGE A SERVICE LOCATOR TO MAP THE SPECIFIC LOCATIONS AND DEPTHS OF ALL SERVICES AND ADVISE ALL RELEVANT STAFF AND SUBCONTRACTORS IN WRITING PRIOR TO COMMENCING WORKS ON SITE.

C	10.05.24	AK	ISSUE FOR APPROVAL
B	05.12.23	AK	ISSUE FOR COMMENT TO 75% RESOLUTION
A	29.11.23	AK	ISSUE FOR COMMENT
REV	DATE	BY	ISSUE OR AMENDMENT

THIS IS AN UNCONTROLLED DOCUMENT ISSUED FOR INFORMATION ONLY UNLESS SIGNED BELOW AT EACH RELEVANT STAGE.

INTERNAL DESIGN REVIEW
 THIS DESIGN IS NOT AUTHORISED FOR CONSTRUCTION UNLESS SIGNED BY THE DESIGNER.
 THE DRAWING IS NOT AUTHORISED FOR TENDER WITHOUT BEING INTERNALLY REVIEWED AND SIGNED HERE.

INTERNAL PRETENDER REVIEW
 THE DRAWING IS NOT AUTHORISED FOR TENDER WITHOUT BEING INTERNALLY REVIEWED AND SIGNED HERE.

AUTHORISED FOR CONSTRUCTION
 THIS DRAWING IS NOT AUTHORISED FOR CONSTRUCTION UNLESS IT IS SIGNED BY A REGISTERED PROFESSIONAL ENGINEER.

emerge ASSOCIATES
 Integrated Science & Design
 PERTH (08) 9380 4988 • MARGARET RIVER (08) 9758 8159

PROJECT: MAHALA, FORRESTDALE
 STAGE OR PHASE: LIVING STREAM POS
 DRAWING TITLE: OVERALL PLAN POS 3
 CLIENT: ANSTEY ROAD DEVELOPMENTS PTY LTD

DESIGNED BY: AK PRELIM DESIGN REVIEWED BY: SC
 DRAWN BY: JW PRELIM DWG REVIEWED BY: AK
 DATE INITIALLY DRAWN: 24.11.23
 SCALE: 1:### @ A1 METRES
 DRAWING NUMBER: ARF08-100
 REV: C

PRELIMINARY
 NOT FOR CONSTRUCTION
 INFORMATION ONLY

PRELIMINARY
NOT FOR CONSTRUCTION
INFORMATION ONLY

227

228

229

230

231

233



POS 2 PLANTING SCHEDULE

POS 2 PM 01 (LS 1 in 3)

Sym.	Key	Botanic Name	Common Name	Pot	Qty.
Cin		Carex inversa		Tube	106
Fno		Ficinia nodosa	Knobby Club Rush	Tube	106
Lca		Lepidosperma calcicola		Tube	106
Lsq		Lepidosperma squamatum		Tube	106

POS 2 PM 02 (LS to 5yr)

Sym.	Key	Botanic Name	Common Name	Pot	Qty.
Bel		Beaufortia elegans		Tube	150
Cin		Carex inversa		Tube	250
Cac		Conostylis aculeata	Prickly Conostylis	Tube	125
Fno		Ficinia nodosa	Knobby Club Rush	Tube	150
Lca		Lepidosperma calcicola		Tube	150
Lsq		Lepidosperma squamatum		Tube	125
Mse		Melaleuca seriata		Tube	150

POS 2 PM 04 (LS 100yr Area)

Sym.	Key	Botanic Name	Common Name	Pot	Qty.
Dre		Dianella revoluta Little Rev	Little Rev	Tube	271
Egl		Eremophila glabra Blue Horizon	Blue Horizon	Tube	271
Gcr		Grevillea crithmifolia prostrata	Swan River Myrtle	Tube	271
Gth		Grevillea thelemanniana Mini Marvel	Mini Marvel Grevillea	Tube	271
Hca		Hypocalymma angustifolium	Pink Flowered Myrtle	Tube	271
LoT		Lomandra Tanika	Tanika	Tube	271
Mse		Melaleuca seriata		Tube	271
Tba		Thryptomene baecaeacea Pink Cascade	Pink Cascade	Tube	271

POS 2 PM 05 (Verges)

Sym.	Key	Botanic Name	Common Name	Pot	Qty.
Anvi		Anizogamthus viridis	Green Kangaroo Paw	14 cm	314
DISS		Dianella Silver Streak	Silver Streak	14 cm	314
Grob		Grevillea obtusifolia Gin Gem	Gin Gin Gem	14 cm	314
Hepu		Hemidra pungens	Snakebush	14 cm	314
Tbha		Thryptomene baecaeacea Pink Cascade	Pink Cascade	14 cm	314

POS 2 PM 06 (low 1)

Sym.	Key	Botanic Name	Common Name	Pot	Qty.
Bani		Banksia nivea	Honeypot Dryandra	14 cm	438
Hepu		Hemidra pungens purpurea	Purple Snakebush	14 cm	438
LoTa		Lomandra Tanika	Tanika	14 cm	438
Piro		Pimelea rosea	Rose Banjine	14 cm	438
WeLH		Westringea fruticosa Low Horizon	Low Horizon	14 cm	438

POS 2 PM 07 (low 2)

Sym.	Key	Botanic Name	Common Name	Pot	Qty.
Daci		Darwinia citrodora Seaspray	Seaspray Darwinia	14 cm	529
Dre		Dianella revoluta Little Rev	Little Rev	14 cm	529
Gcr		Grevillea crithmifolia prostrata	Green Carpet Grevillea	14 cm	529
Gria		Grevillea lanigera Mt Tamboritha	Mt Tamboritha	14 cm	529
WeGB		Westringea Grey Box	Grey Box	14 cm	529

PLANT AND TREE NUMBERS IN SCHEDULE ARE TO BE USED AS GUIDE ONLY. TENDERERS TO REFER LABELS ON PLANS FOR NUMBERS. PLANT NUMBERS AND SPECIES ARE SUBJECT TO AVAILABILITY.

POS 2 Trees

Sym.	Key	Botanic Name	Common Name	Pot	Qty.
Coc		Corymbia calophylla	Mari	100 Litre	6
CoS		Corymbia ficifolia Summer Beauty	Summer Beauty	200 Litre	10
Euma		Eucalyptus marginata	Jarrah	200 Litre	17
Eur		Eucalyptus rudis	Flooded Gum	100 Litre	3
Er		Eucalyptus rudis	Flooded Gum	13 Litre	1
Mel		Melaleuca leucadendra	Weeping Paperbark	100 Litre	13
Mp		Melaleuca preissiana	Stout paperbark	13 Litre	1
Mepr		Melaleuca preissiana	Stout Paperbark	45 Litre	2
Mep		Melaleuca preissiana	Stout Paperbark	100 Litre	6
Mr		Melaleuca raphiophylla	Swamp paperbark	13 Litre	1
Merh		Melaleuca raphiophylla	Swamp Paperbark	45 Litre	2
Mer		Melaleuca raphiophylla	Swamp Paperbark	100 Litre	3

PLANT AND TREE NUMBERS IN SCHEDULE ARE TO BE USED AS GUIDE ONLY. TENDERERS TO REFER LABELS ON PLANS FOR NUMBERS. PLANT NUMBERS AND SPECIES ARE SUBJECT TO AVAILABILITY.

LEGEND

- EXTENT OF WORKS
- PROPOSED PLANTING
- PROPOSED TREES
- JUTE EROSION CONTROL MESHMAT (1 in 3 LIVING STREAM SIDE SLOPES)
- ROLL ON TURF
- EXISTING TREES TO BE RETAINED AND PROTECTED

NOTE: 2m WIDE BASE OF FLOW CHANNEL TO BE KEPT CLEAR OF PLANTING.

- STANDARD NOTES**
- SET OUT & DIMENSIONS.** THE CONTRACTOR SHALL SET OUT ALL PATHS, WALLS, HANDS, SURFACES AND ELEMENTS EITHER ON OR OFF SITE PRIOR TO CONSTRUCTION AND SHALL OBTAIN THE SUPERINTENDENT'S SET OUT APPROVAL PRIOR TO WORKS COMMENCING. WRITTEN DIMENSIONS SHALL TAKE PRECEDENCE OVER SCALE. CHECK ALL DRAWING SIZES IN CONJUNCTION WITH DRAWING SIZE.
 - SERVICES & SITE ASSETS.** THE CONTRACTOR SHALL INVESTIGATE THE NATURE AND LOCATION OF ALL EXISTING SERVICES AND RETAINED SITE ASSETS AFFECTED BY THEIR WORKS. FAILURE TO TAKE DUE CARE SHALL NOT LIMIT THE CONTRACTOR'S LIABILITIES.
 - REFERENCE.** THE CONTRACTOR SHALL REFER TO ALL CONTRACT DOCUMENTS, THE SPECIFICATION AND DRAWINGS PRIOR TO AND DURING THE WORKS.
 - DISCREPANCIES.** NOTIFY SUPERINTENDENT OF ANY SUSPECTED DISCREPANCIES OR ERRORS PRIOR TO THE ORDERING OF AFFECTED MATERIALS AND/OR CONSTRUCTION OF AFFECTED WORKS.
 - RELEVANT STANDARDS.** THE CONTRACTOR SHALL UNDERTAKE ALL PRICING AND WORKS IN ACCORDANCE WITH CURRENT INDUSTRY BEST PRACTICE AND ALL RELEVANT AUSTRALIAN STANDARDS.
 - SERVICE LOCATOR.** THE CONTRACTOR SHALL UNDERTAKE A DIAL BEFORE YOU DIG PROCESS PRIOR TO COMMENCING WORKS ON SITE. THE CONTRACTOR SHALL ENGAGE A SERVICE LOCATOR TO MAP THE SPECIFIC LOCATIONS AND DEPTHS OF ALL SERVICES AND ADVISE ALL RELEVANT STAFF AND SUBCONTRACTORS IN WRITING PRIOR TO COMMENCING WORKS ON SITE.

REV	DATE	BY	ISSUE OR AMENDMENT
B	10.05.24	AK	ISSUE FOR APPROVAL
A	17.01.24	AK	ISSUE FOR COMMENT: 75% RESOLUTION

THIS IS AN UNCONTROLLED DOCUMENT ISSUED FOR INFORMATION ONLY UNLESS SIGNED BELOW AT EACH RELEVANT STAGE.

INTERNAL DESIGN REVIEW
THE DESIGN IS NOT AUTHORISED FOR TENDER WITHOUT BEING INTERNALLY REVIEWED AND ENDORSED BY: _____ EMERGE DIRECTOR

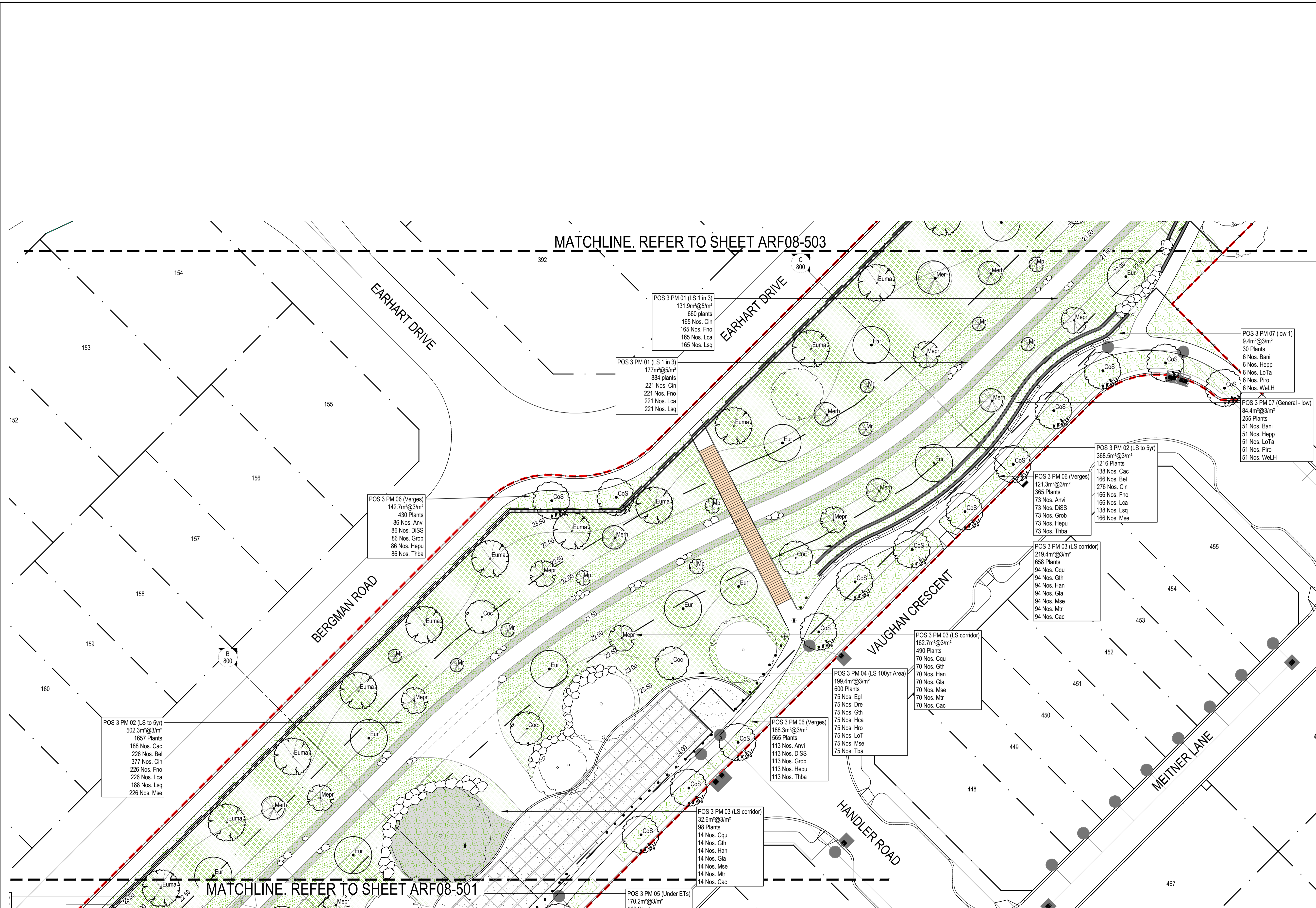
INTERNAL PRETENDER REVIEW
THE DRAWING IS NOT AUTHORISED FOR CONSTRUCTION UNLESS IT IS MARKED "REV" OR "REVISED" AND IS SIGNED HERE: _____ EMERGE DIRECTOR

emerge ASSOCIATES
Integrated Science & Design
PERTH (08) 9380 4988 • MARGARET RIVER (08) 9758 8159

PROJECT: MAHALA, FORRESTDALE
STAGE OR PHASE: LIVING STREAM POS
DRAWING TITLE: PLANTING PLAN 01 POS 2
CLIENT: ANSTEY ROAD DEVELOPMENTS PTY LTD

DESIGNED BY: AK PRELIM DESIGN REVIEWED BY: SC
DRAWN BY: JW PRELIM DWG REVIEWED BY: AK
DATE INITIALLY DRAWN: 24.11.23
SCALE: @ A1

DRAWING NUMBER: ARF08-500
REV: B



LEGEND

- EXTENT OF WORKS
- PROPOSED PLANTING (1-2, 4-5, 971)
- PROPOSED TREES (4-7, 971)
- JUTE EROSION CONTROL MESHMAT (1 IN 3 LIVING STREAM SIDE SLOPES) (7, 971)
- ROLL ON TURF (03, 971)
- EXISTING TREES TO BE RETAINED AND PROTECTED

NOTE: 2m WIDE BASE OF FLOW CHANNEL TO BE KEPT CLEAR OF PLANTING.

- STANDARD NOTES**
- SET OUT & DIMENSIONS.** THE CONTRACTOR SHALL SET OUT ALL POSITIONS, WALL SURFACES AND ELEMENTS EITHER ON OR OFF SITE PRIOR TO CONSTRUCTION AND SHALL OBTAIN THE SUPERINTENDENT'S SET OUT APPROVAL PRIOR TO WORKS COMMENCING. WRITTEN DIMENSIONS SHALL TAKE PRECEDENCE OVER SCALE. CHECK ALL DRAWING SCALES IN CONJUNCTION WITH DRAWING SIZE.
 - SERVICES & SITE ASSETS.** THE CONTRACTOR SHALL INVESTIGATE THE NATURE AND LOCATION OF ALL EXISTING SERVICES AND RETAINED SITE ASSETS AFFECTED BY THEIR WORKS. FAILURE TO TAKE DUE CARE SHALL NOT LIMIT THE CONTRACTOR'S LIABILITIES.
 - REFERENCE.** THE CONTRACTOR SHALL REFER TO ALL CONTRACT DOCUMENTS, THE SPECIFICATION AND DRAWINGS PRIOR TO AND DURING THE WORKS.
 - DISCREPANCIES.** NOTIFY SUPERINTENDENT OF ANY SUSPECTED DISCREPANCIES OR ERRORS PRIOR TO THE ORDERING OF AFFECTED MATERIALS AND/OR CONSTRUCTION OF AFFECTED WORKS.
 - RELEVANT STANDARDS.** THE CONTRACTOR SHALL UNDERTAKE ALL PRICING AND WORKS IN ACCORDANCE WITH CURRENT INDUSTRY BEST PRACTICE AND ALL RELEVANT AUSTRALIAN STANDARDS.
 - SERVICE LOCATOR.** THE CONTRACTOR SHALL UNDERTAKE A DIAL BEFORE YOU DIG PROCESS PRIOR TO COMMENCING WORKS ON SITE. THE CONTRACTOR SHALL ENGAGE A SERVICE LOCATOR TO MAP THE SPECIFIC LOCATIONS AND DEPTHS OF ALL SERVICES AND ADVISE ALL RELEVANT STAFF AND SUBCONTRACTORS IN WRITING PRIOR TO COMMENCING WORKS ON SITE.

REV	DATE	BY	ISSUE OR AMENDMENT
C	10.05.24	AK	ISSUE FOR APPROVAL
B	05.12.23	AK	ISSUE FOR COMMENT: 75% RESOLUTION
A	29.11.23	AK	ISSUE FOR COMMENT

THIS IS AN UNCONTROLLED DOCUMENT ISSUED FOR INFORMATION ONLY UNLESS SIGNED BELOW AT EACH RELEVANT STAGE.

INTERNAL DESIGN REVIEW
 THE DESIGN IS NOT AUTHORISED FOR TENDER WITHOUT BEING INTERNALLY REVIEWED AND ENDORSED BY THE EMERGE DIRECTOR

INTERNAL PRETENDER REVIEW
 THE DRAWING IS NOT AUTHORISED FOR CONSTRUCTION UNLESS IT IS MARKED 'REV' OR 'REVISED AND ENDORSED BY THE EMERGE DIRECTOR'

AUTHORISED FOR CONSTRUCTION
 THE DRAWING IS NOT AUTHORISED FOR CONSTRUCTION UNLESS IT IS MARKED 'REV' OR 'REVISED AND ENDORSED BY THE EMERGE DIRECTOR'

emerge ASSOCIATES
 Integrated Science & Design
 PERTH (08) 9380 4088 • MARGARET RIVER (08) 9758 8159

PROJECT: MAHALA, FORRESTDALE
 STAGE OR PHASE: LIVING STREAM POS
 DRAWING TITLE: PLANTING PLAN 03
 POS 3
 CLIENT: ANSTEY ROAD DEVELOPMENTS PTY LTD

DESIGNED BY: AK PRELIM DESIGN REVIEWED BY: SC
 DRAWN BY: JW PRELIM DWG REVIEWED BY: AK
 DATE INITIALLY DRAWN: 24.11.23
 SCALE: 1:250 @ A1 METRES
 DRAWING NUMBER: ARF08-502
 REV: C

PRELIMINARY
 NOT FOR CONSTRUCTION
 INFORMATION ONLY

POS 3 PLANTING SCHEDULE

POS 3 PM 01 (LS 1 in 3)

Sym.	Key	Botanic Name	Common Name	Pot	Qty.
Cin		Carex inversa	Knobby Club Rush	Tube	920
Fno		Ficinia nodosa	Knobby Club Rush	Tube	920
Lca		Lepidosperma calcicola		Tube	920
Lsq		Lepidosperma squamatum		Tube	920

POS 3 PM 03 (LS corridor)

Sym.	Key	Botanic Name	Common Name	Pot	Qty.
Cqu		Calothamnus quadrifidus Little Ripper	Little Ripper	Tube	1850
Cac		Conostylis aculeata	Prickly Conostylis	Tube	1850
Gla		Grevillea lanigera Mt Tamboritha	Mt Tamboritha Grevillea	Tube	1850
Gth		Grevillea thelemanniana Mini Marvel	Mini Marvel Grevillea	Tube	1850
Han		Hypocalymma angustifolium	White Myrtle	Tube	1850
Mse		Melaleuca serata		Tube	1850
Mtr		Melaleuca trichophylla		Tube	1850

POS 3 PM 04 (LS 100yr Area)

Sym.	Key	Botanic Name	Common Name	Pot	Qty.
Dre		Dianella revoluta Little Rev	Little Rev	Tube	1652
Egl		Eremophila glabra Blue Horizon	Blue Horizon	Tube	1652
Hro		Grevillea crithmifolia prostrata	Green Carpet Grevillea	Tube	1652
Gth		Grevillea thelemanniana Mini Marvel	Mini Marvel Grevillea	Tube	1652
Hca		Hypocalymma angustifolium	Pink Flowered Myrtle	Tube	1652
LoT		Lomandra Tanika	Tanika	Tube	1652
Mse		Melaleuca serata		Tube	1652
Tba		Thryptomene baeckeacea Pink Cascade	Pink Cascade	Tube	1652

POS 3 PM 05 (Under ETs)

Key	Botanic Name	Common Name	Pot	Qty.
Ama	Anizoganthus manglesii	Red Green Kangaroo Paw	Tube	502
Gcr	Grevillea crithmifolia prostrata	Green Carpet	Tube	502
Hpu	Hemiantra pungens	Snakebush	Tube	502
LoT	Lomandra Tanika	Tanika	Tube	502

POS 3 PM 06 (Verges)

Sym.	Key	Botanic Name	Common Name	Pot	Qty.
Ami		Anizoganthus viridis	Green Kangaroo Paw	14 cm	713
DISS		Dianella Silver Streak	Silver Streak	14 cm	713
Grob		Grevillea obtusifolia Gin Gin Gem	Gin Gin Gem	14 cm	713
Hepu		Hemiantra pungens	Snakebush	14 cm	713
Tbha		Thryptomene baeckeacea Pink Cascade	Pink Cascade	14 cm	713

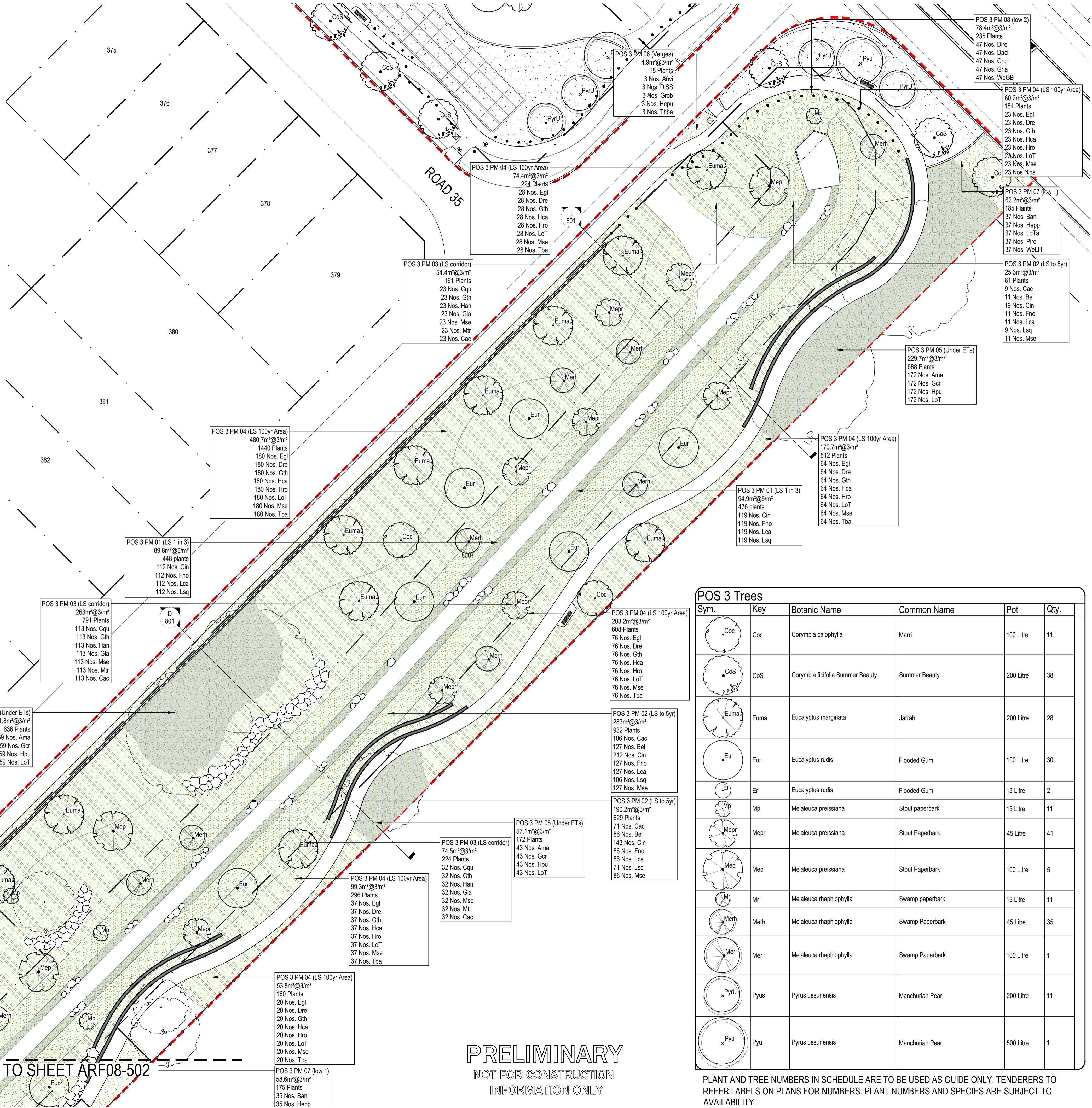
POS 3 PM 07 (low 1)

Sym.	Key	Botanic Name	Common Name	Pot	Qty.
Bani		Banksia nivea	Honeyput Dryandra	14 cm	218
Hepp		Hemiantra pungens purpurea	Purple Snakebush	14 cm	218
LoTa		Lomandra Tanika	Tanika	14 cm	218
Piro		Pimelea rosea	Rose Banjine	14 cm	218
WeLH		Westringea fruticosa Low Horizon	Low Horizon	14 cm	218

POS 3 PM 08 (low 2)

Sym.	Key	Botanic Name	Common Name	Pot	Qty.
Daci		Darwinia citriodora Seaspray	Seaspray Darwinia	14 cm	316
Dre		Dianella revoluta Little Rev	Little Rev	14 cm	316
Gcr		Grevillea crithmifolia prostrata	Green Carpet Grevillea	14 cm	316
Gria		Grevillea lanigera Mt Tamboritha	Mt Tamboritha Grevillea	14 cm	316
WeGB		Westringea Grey Box	Grey Box	14 cm	316

PLANT AND TREE NUMBERS IN SCHEDULE ARE TO BE USED AS GUIDE ONLY. TENDERERS TO REFER LABELS ON PLANS FOR NUMBERS. PLANT NUMBERS AND SPECIES ARE SUBJECT TO AVAILABILITY.



LEGEND

- EXTENT OF WORKS
- PROPOSED PLANTING
- PROPOSED TREES
- JUTE EROSION CONTROL MESHMAT (1 IN 3 LIVING STREAM SIDE SLOPES)
- ROLL ON TURF
- EXISTING TREES TO BE RETAINED AND PROTECTED

NOTE: 2m WIDE BASE OF FLOW CHANNEL TO BE KEPT CLEAR OF PLANTING.

STANDARD NOTES

- SET OUT & DIMENSIONS.** THE CONTRACTOR SHALL SET OUT ALL PATHS, WALLS, HANDS, SURFACES AND ELEMENTS EITHER ON OR OFF SITE PRIOR TO CONSTRUCTION AND SHALL OBTAIN THE SUPERINTENDENT'S SET OUT APPROVAL PRIOR TO WORKS COMMENCING. WRITTEN DIMENSIONS SHALL TAKE PRECEDENCE OVER SCALE. CHECK ALL DRAWING SCALES IN CONJUNCTION WITH DRAWING SIZE.
- SERVICES & SITE ASSETS.** THE CONTRACTOR SHALL INVESTIGATE THE NATURE AND LOCATION OF ALL EXISTING SERVICES AND THE FINER SITE ASSETS AFFECTED BY THEIR WORKS. FAILURE TO TAKE DUE CARE SHALL NOT LIMIT THE CONTRACTOR'S LIABILITIES.
- REFERENCE.** THE CONTRACTOR SHALL REFER TO ALL CONTRACT DOCUMENTS, THE SPECIFICATION AND DRAWINGS PRIOR TO AND DURING THE WORKS.
- DISCREPANCIES.** NOTIFY SUPERINTENDENT OF ANY SUSPECTED DISCREPANCIES OR ERRORS PRIOR TO THE ORDERING OF AFFECTED MATERIALS AND/OR CONSTRUCTION OF AFFECTED WORKS.
- RELEVANT STANDARDS.** THE CONTRACTOR SHALL UNDERTAKE ALL PRICING AND WORKS IN ACCORDANCE WITH CURRENT INDUSTRY BEST PRACTICE AND ALL RELEVANT AUSTRALIAN STANDARDS.
- SERVICE LOCATOR.** THE CONTRACTOR SHALL UNDERTAKE A DIAL BEFORE YOU DIG PROCESS PRIOR TO COMMENCING WORKS ON SITE. THE CONTRACTOR SHALL ENGAGE A SERVICE LOCATOR TO MAP THE SPECIFIC LOCATIONS AND DEPTHS OF ALL SERVICES AND ADVISE ALL RELEVANT STAFF AND SUBCONTRACTORS IN WRITING PRIOR TO COMMENCING WORKS ON SITE.

POS 3 Trees

Sym.	Key	Botanic Name	Common Name	Pot	Qty.
Coc		Corymbia calophylla	Marri	100 Litre	11
CoS		Corymbia ficifolia Summer Beauty	Summer Beauty	200 Litre	38
Euma		Eucalyptus marginata	Jarrah	200 Litre	28
Eur		Eucalyptus rudis	Flooded Gum	100 Litre	30
Er		Eucalyptus rudis	Flooded Gum	13 Litre	2
Mp		Melaleuca preissiana	Stout paperbark	13 Litre	11
Mepr		Melaleuca preissiana	Stout Paperbark	45 Litre	41
Mep		Melaleuca preissiana	Stout Paperbark	100 Litre	5
Mr		Melaleuca raphiophylla	Swamp paperbark	13 Litre	11
Merh		Melaleuca raphiophylla	Swamp Paperbark	45 Litre	35
Mer		Melaleuca raphiophylla	Swamp Paperbark	100 Litre	1
Pyu		Pyrus ussuriensis	Manchurian Pear	200 Litre	11
Pyu		Pyrus ussuriensis	Manchurian Pear	500 Litre	1

PLANT AND TREE NUMBERS IN SCHEDULE ARE TO BE USED AS GUIDE ONLY. TENDERERS TO REFER LABELS ON PLANS FOR NUMBERS. PLANT NUMBERS AND SPECIES ARE SUBJECT TO AVAILABILITY.

PRELIMINARY
NOT FOR CONSTRUCTION
INFORMATION ONLY

MATCHLINE. REFER TO SHEET ARF08-502

emerge ASSOCIATES
Integrated Science & Design
PERTH (08) 9380 4088 • MARGARET RIVER (08) 9758 8159

PROJECT: MAHALA, FORRESTDALE
STAGE OR PHASE: LIVING STREAM POS
DRAWING TITLE: PLANTING PLAN 04 POS 3
CLIENT: ANSTEY ROAD DEVELOPMENTS PTY LTD

DESIGNED BY: AK PRELIM DESIGN REVIEWED BY: SC
DRAWN BY: JW PRELIM DWG REVIEWED BY: AK
DATE INITIALLY DRAWN: 13.11.23
SCALE: 1:250 @ A1 METRES
DRAWING NUMBER: ARF08-503
REV: C

MATCHLINE. REFER TO SHEET ARF08-505



LEGEND

- EXTENT OF WORKS
- PROPOSED PLANTING (1:2, 4:5, 9:1)
- PROPOSED TREES (4:7, 9:1)
- JUTE EROSION CONTROL MESH/MAT (1 IN 3 LIVING STREAM SIDE SLOPES) (7, 9:1)
- ROLL ON TURF (0:3, 9:1)
- EXISTING TREES TO BE RETAINED AND PROTECTED

NOTE: 2m WIDE BASE OF FLOW CHANNEL TO BE KEPT CLEAR OF PLANTING.

- STANDARD NOTES**
- SET OUT & DIMENSIONS.** THE CONTRACTOR SHALL SET OUT ALL THE WORKS AND LOCATIONS OF ALL EXISTING SERVICES AND THE FINISHED SITE ASSETS AFFECTED BY THEIR WORKS. FAILURE TO TAKE DUE CARE SHALL NOT LIMIT THE CONTRACTOR'S LIABILITIES.
 - SERVICES & SITE ASSETS.** THE CONTRACTOR SHALL INVESTIGATE THE NATURE AND LOCATION OF ALL EXISTING SERVICES AND THE FINISHED SITE ASSETS AFFECTED BY THEIR WORKS. FAILURE TO TAKE DUE CARE SHALL NOT LIMIT THE CONTRACTOR'S LIABILITIES.
 - REFERENCE.** THE CONTRACTOR SHALL REFER TO ALL CONTRACT DOCUMENTS, THE SPECIFICATION AND DRAWINGS PRIOR TO AND DURING THE WORKS.
 - DISCREPANCIES.** NOTIFY SUPERINTENDENT OF ANY SUSPECTED DISCREPANCIES OR ERRORS PRIOR TO THE ORDERING OF AFFECTED MATERIALS AND/OR CONSTRUCTION OF AFFECTED WORKS.
 - RELEVANT STANDARDS.** THE CONTRACTOR SHALL UNDERTAKE ALL PRICES AND WORKS IN ACCORDANCE WITH CURRENT INDUSTRY BEST PRACTICE AND ALL RELEVANT AUSTRALIAN STANDARDS.
 - SERVICE LOCATOR.** THE CONTRACTOR SHALL UNDERTAKE A DIAL BEFORE YOU DIG PROCESS PRIOR TO COMMENCING WORKS ON SITE. THE CONTRACTOR SHALL ENGAGE A SERVICE LOCATOR TO MAP THE SPECIFIC LOCATIONS AND DEPTHS OF ALL SERVICES AND ADVISE ALL RELEVANT STAFF AND SUBCONTRACTORS IN WRITING PRIOR TO COMMENCING WORKS ON SITE.

REV	DATE	BY	ISSUE OR AMENDMENT
C	10.05.24	AK	ISSUE FOR APPROVAL
B	05.12.23	AK	ISSUE FOR COMMENT, 75% RESOLUTION
A	30.11.23	AK	ISSUE FOR COMMENT

THIS IS AN UNCONTROLLED DOCUMENT ISSUED FOR INFORMATION ONLY UNLESS SIGNED BELOW AT EACH RELEVANT STAGE.

INTERNAL DESIGN REVIEW
 THE DRAWING IS NOT AUTHORIZED FOR TENDER WITHOUT BEING INTERNALLY REVIEWED AND ENDORSED BY: _____ EMERGE DIRECTOR

INTERNAL PRETENDER REVIEW
 THE DRAWING IS NOT AUTHORIZED FOR TENDER WITHOUT BEING INTERNALLY REVIEWED AND ENDORSED BY: _____ EMERGE DIRECTOR

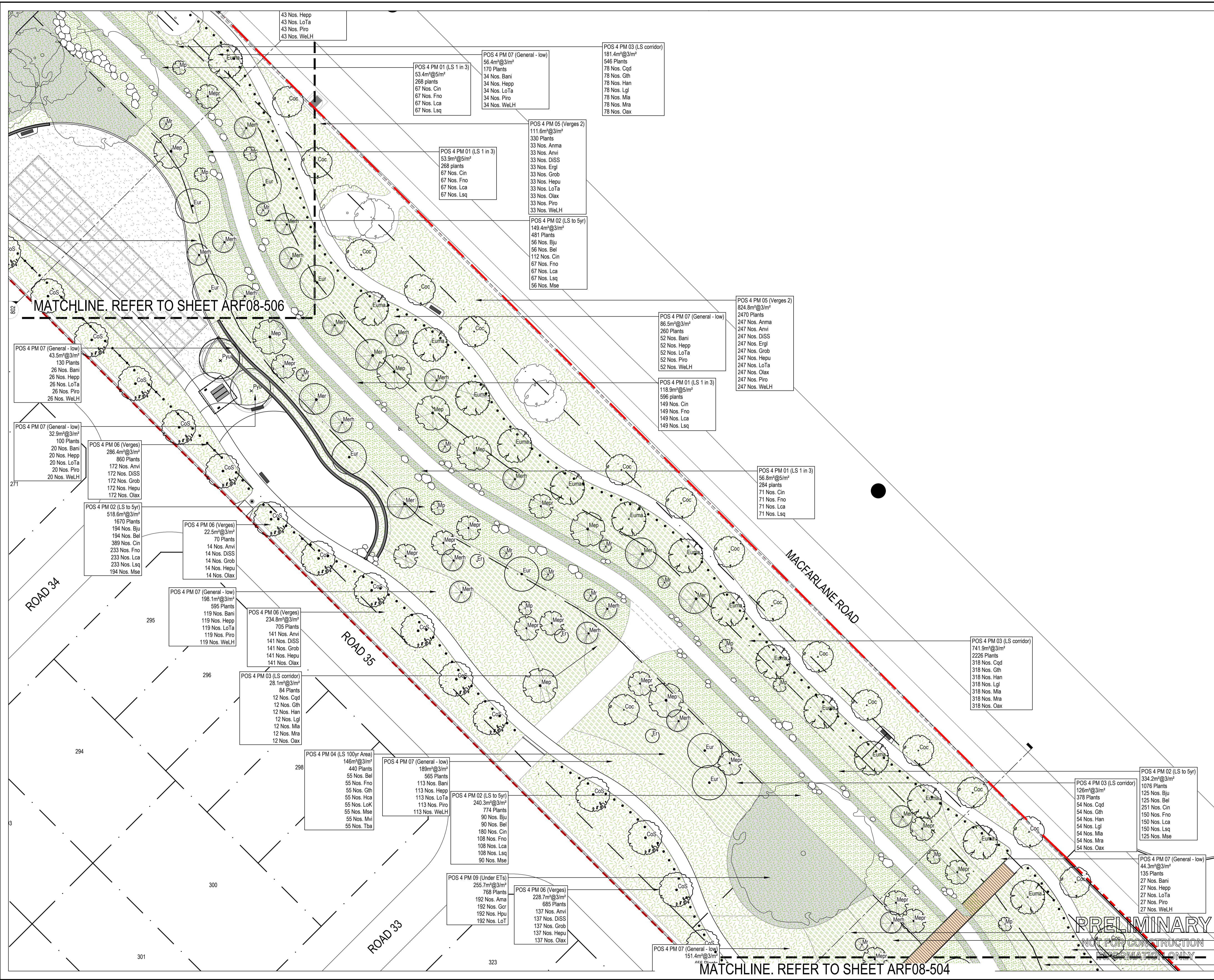
AUTHORISED FOR CONSTRUCTION
 THE DRAWING IS NOT AUTHORIZED FOR CONSTRUCTION UNLESS IT IS MARKED REV 1 OR HIGHER AND IS SIGNED BY: _____ EMERGE DIRECTOR

emerge ASSOCIATES
 Integrated Science & Design
 PERTH (08) 9380 4988 • MARGARET RIVER (08) 9758 8159

PROJECT: MAHALA, FORRESTDALE
 STAGE OR PHASE: LIVING STREAM POS
 DRAWING TITLE: PLANTING PLAN 05 POS 4
 CLIENT: ANSTEY ROAD DEVELOPMENTS PTY LTD

DESIGNED BY: AK PRELIM DESIGN REVIEWED BY: SC
 DRAWN BY: JW PRELIM DWG REVIEWED BY: AK
 DATE INITIALLY DRAWN: 24.11.23
 SCALE: 1:250 @ A1 METRES
 DRAWING NUMBER: ARF08-504
 REV: C

PRELIMINARY
 NOT FOR CONSTRUCTION
 INFORMATION ONLY



LEGEND

- EXTENT OF WORKS
- PROPOSED PLANTING (1:2, 4:5, 971)
- PROPOSED TREES (4:7, 971)
- JUTE EROSION CONTROL MESHMAT (1 IN 3 LIVING STREAM SIDE SLOPES) (7, 971)
- ROLL ON TURF (03, 971)
- EXISTING TREES TO BE RETAINED AND PROTECTED

NOTE: 2m WIDE BASE OF FLOW CHANNEL TO BE KEPT CLEAR OF PLANTING.

- STANDARD NOTES**
- SET OUT & DIMENSIONS:** THE CONTRACTOR SHALL SET OUT ALL EXISTING WALLS, SURFACES AND ELEMENTS EITHER ON OR OFF SITE PRIOR TO CONSTRUCTION AND SHALL OBTAIN THE SUPERINTENDENT'S SET OUT APPROVAL PRIOR TO WORKS COMMENCING. WRITTEN DIMENSIONS SHALL TAKE PRECEDENCE OVER SCALE. CHECK ALL DRAWING SCALES IN CONJUNCTION WITH DRAWING SIZE.
 - SERVICES & SITE ASSETS:** THE CONTRACTOR SHALL INVESTIGATE THE NATURE AND LOCATION OF ALL EXISTING SERVICES AND THE TRENCH SITE ASSETS AFFECTED BY THEIR WORKS. FAILURE TO TAKE DUE CARE SHALL NOT LIMIT THE CONTRACTOR'S LIABILITIES.
 - REFERENCE:** THE CONTRACTOR SHALL REFER TO ALL CONTRACT DOCUMENTS, THE SPECIFICATION AND DRAWINGS PRIOR TO AND DURING THE WORKS.
 - DISCREPANCIES:** NOTIFY SUPERINTENDENT OF ANY SUSPECTED DISCREPANCIES OR ERRORS PRIOR TO THE ORDERING OF AFFECTED MATERIALS AND/OR CONSTRUCTION OF AFFECTED WORKS.
 - RELEVANT STANDARDS:** THE CONTRACTOR SHALL UNDERTAKE ALL PRICES AND WORKS IN ACCORDANCE WITH CURRENT INDUSTRY BEST PRACTICE AND ALL RELEVANT AUSTRALIAN STANDARDS.
 - SERVICE LOCATOR:** THE CONTRACTOR SHALL UNDERTAKE A DIAL BEFORE YOU DIG PROCESS PRIOR TO COMMENCING WORKS ON SITE. THE CONTRACTOR SHALL ENGAGE A SERVICE LOCATOR TO MAP THE SPECIFIC LOCATIONS AND DEPTHS OF ALL SERVICES AND ADVISE ALL RELEVANT STAFF AND SUBCONTRACTORS IN WRITING PRIOR TO COMMENCING WORKS ON SITE.

REV	DATE	BY	ISSUE OR AMENDMENT
C	10.05.24	AK	ISSUE FOR APPROVAL
B	05.12.23	AK	ISSUE FOR COMMENT: 75% RESOLUTION
A	30.11.23	AK	ISSUE FOR COMMENT

THIS IS AN UNCONTROLLED DOCUMENT ISSUED FOR INFORMATION ONLY UNLESS SIGNED BELOW AT EACH RELEVANT STAGE.

INTERNAL DESIGN REVIEW
 THE DESIGN IS NOT AUTHORISED FOR TENDER WITHOUT BEING INTERNALLY REVIEWED AND ENDORSED HERE
 EMERGE DIRECTOR

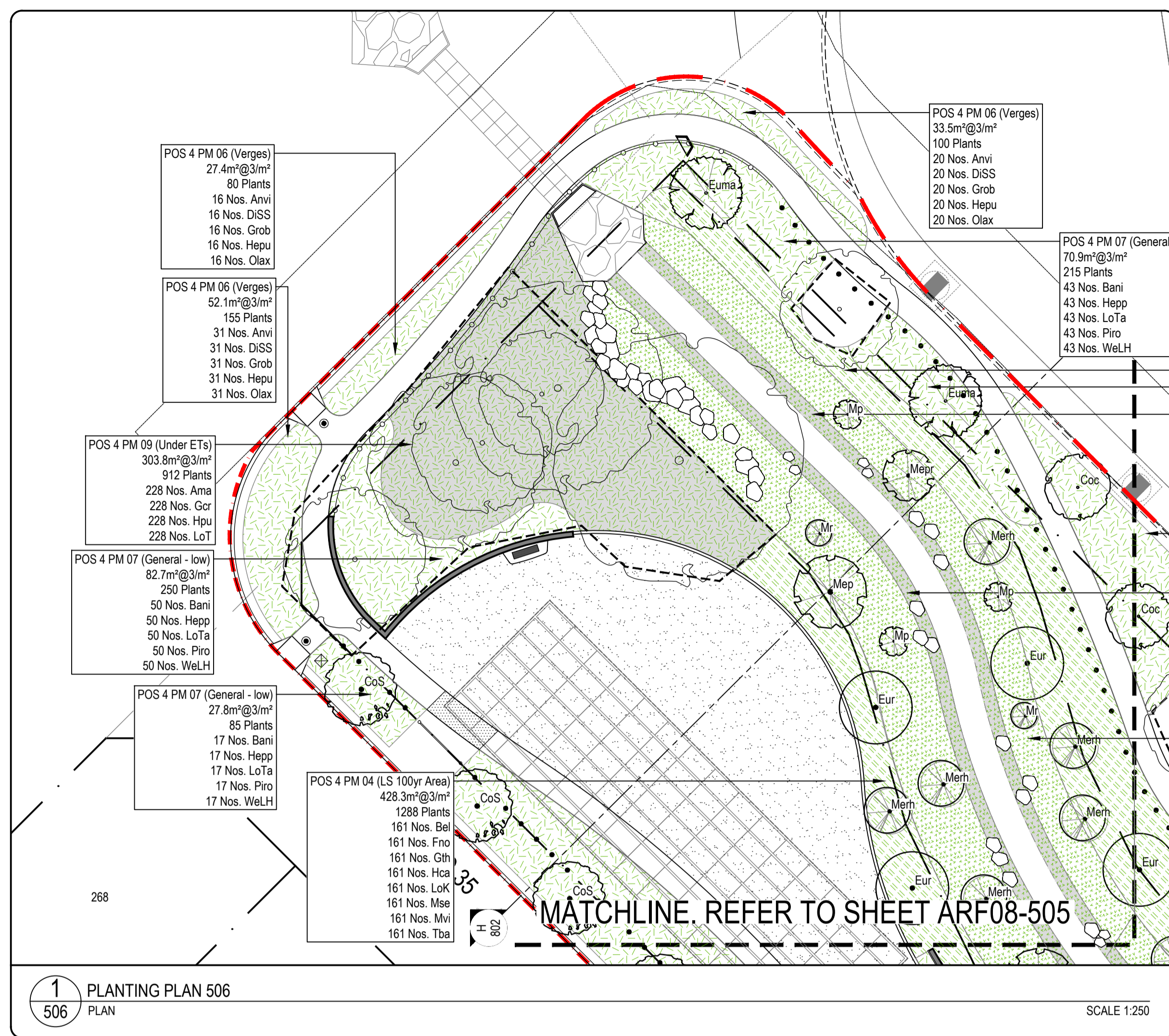
INTERNAL PRETENDER REVIEW
 THE DRAWING IS NOT AUTHORISED FOR CONSTRUCTION UNLESS IT IS MARKED REV 1 OR HIGHER AND IS SIGNED HERE
 EMERGE DIRECTOR

AUTHORISED FOR CONSTRUCTION
 THE DRAWING IS NOT AUTHORISED FOR CONSTRUCTION UNLESS IT IS MARKED REV 1 OR HIGHER AND IS SIGNED HERE
 EMERGE DIRECTOR

emerge ASSOCIATES
 Integrated Science & Design
 PERTH (08) 9380 4988 • MARGARET RIVER (08) 9758 8159

PROJECT: MAHALA, FORRESTDALE
 STAGE OR PHASE: LIVING STREAM POS
 DRAWING TITLE: PLANTING PLAN 06 POS 4
 CLIENT: ANSTEY ROAD DEVELOPMENTS PTY LTD

DESIGNED BY: AK PRELIM DESIGN REVIEWED BY: SC
 DRAWN BY: JW PRELIM DWG REVIEWED BY: AK
 DATE INITIALLY DRAWN: 24.11.23
 SCALE: 1:250 @ A1 METRES
 DRAWING NUMBER: ARF08-505
 REV: C



POS 4 Trees

Sym.	Key	Botanic Name	Common Name	Pot	Qty.
Coc	Coc	Corymbia calophylla	Marri	100 Litre	32
CoS	CoS	Corymbia ficifolia Summer Beauty	Summer Beauty	200 Litre	34
Euma	Euma	Eucalyptus marginata	Jarrah	200 Litre	22
Eur	Eur	Eucalyptus rudis	Flooded Gum	100 Litre	18
Er	Er	Eucalyptus rudis	Flooded Gum	13 Litre	5
Mp	Mp	Melaleuca preissiana	Stout Paperbark	13 Litre	17
Mepr	Mepr	Melaleuca preissiana	Stout Paperbark	45 Litre	27
Mep	Mep	Melaleuca preissiana	Stout Paperbark	100 Litre	13
Mr	Mr	Melaleuca raphiophylla	Swamp Paperbark	13 Litre	17
Merh	Merh	Melaleuca raphiophylla	Swamp Paperbark	45 Litre	27
Mer	Mer	Melaleuca raphiophylla	Swamp Paperbark	100 Litre	7
Pyus	Pyus	Pyrus ussuriensis	Manchurian Pear	200 Litre	4
Pyu	Pyu	Pyrus ussuriensis	Manchurian Pear	500 Litre	4

PLANT AND TREE NUMBERS IN SCHEDULE ARE TO BE USED AS GUIDE ONLY. TENDERERS TO REFER LABELS ON PLANS FOR NUMBERS. PLANT NUMBERS AND SPECIES ARE SUBJECT TO AVAILABILITY.

POS 4 PLANTING SCHEDULE

POS 4 PM 01 (LS 1 in 3)

Sym.	Key	Botanic Name	Common Name	Pot	Qty.
Cin	Cin	Carex inversa	Tube	684	
Fno	Fno	Ficinia nodosa	Knobby Club Rush	Tube	684
Lca	Lca	Lepidosperma calcicola	Tube	684	
Lsq	Lsq	Lepidosperma squamatum	Tube	684	

POS 4 PM 02 (LS to 5yr)

Sym.	Key	Botanic Name	Common Name	Pot	Qty.
Bju	Bju	Baumea juncea	Bare Twig Rush	Tube	815
Bel	Bel	Beaufortia elegans	Tube	815	
Cin	Cin	Carex inversa	Tube	1634	
Fno	Fno	Ficinia nodosa	Knobby Club Rush	Tube	980
Lca	Lca	Lepidosperma calcicola	Tube	980	
Lsq	Lsq	Lepidosperma squamatum	Tube	980	
Mse	Mse	Melaleuca seriata	Tube	815	

POS 4 PM 03 (LS corridor)

Sym.	Key	Botanic Name	Common Name	Pot	Qty.
Cgd	Cgd	Calothamnus quadrifidus	One sided Bottlebrush	Tube	1002
Gih	Gih	Grevillea thelemanniana	Spider Net Grevillea	Tube	1002
Han	Han	Hypocalymma angustifolium	White Myrtle	Tube	1002
Lgl	Lgl	Lepidosperma gladiatum	Coast Sword-sedge	Tube	1002
Mla	Mla	Melaleuca latenta	Robin Red-breast Bush	Tube	1002
Mra	Mra	Melaleuca radula	Graceful Honey-myrtle	Tube	1002
Oax	Oax	Olearia axillaris	Coast Daisy Bush	Tube	1002

POS 4 PM 04 (LS 100yr Area)

Sym.	Key	Botanic Name	Common Name	Pot	Qty.
Bel	Bel	Beaufortia elegans	Tube	424	
Fno	Fno	Ficinia nodosa	Knobby Club Rush	Tube	424
Gih	Gih	Grevillea thelemanniana	Spider Net Grevillea	Tube	424
Hca	Hca	Hypocalymma angustifolium	Pink Flowered Myrtle	Tube	424
LoK	LoK	Lomandra katrinus	Katrinus	Tube	424
Mse	Mse	Melaleuca seriata	Tube	424	
Mvi	Mvi	Melaleuca viridiflora	Tube	424	
Tba	Tba	Thryptomene baeckeacea Pink Cascade	Pink Cascade	Tube	424

POS 4 PM 05 (Verges 2)

Sym.	Key	Botanic Name	Common Name	Pot	Qty.
Anma	Anma	Anizoganthus manglesii	Red Green Kangaroo Paw	14 cm	391
Anvi	Anvi	Anizoganthus viridis	Green Kangaroo Paw	14 cm	391
DiSS	DiSS	Dianella Silver Streak	Silver Streak	14 cm	391
Ergl	Ergl	Eremophila glabra Kalbarri Carpet	Kalbarri Carpet	14 cm	391
Grob	Grob	Grevillea obtusifolia Gin Gin Gem	Gin Gin Gem	14 cm	391
Hepu	Hepu	Hemiandra pungens	Snakebush	14 cm	391
LoTa	LoTa	Lomandra Tanika	Tanika	14 cm	391
Olax	Olax	Olearia axillaris Little Smokie	Little Smokie	14 cm	391
Piro	Piro	Pimelea rosea	Rose Banjine	14 cm	391
WeLH	WeLH	Westringea fruticosa Low Horizon	Low Horizon	14 cm	391

POS 4 PM 06 (Verges)

Sym.	Key	Botanic Name	Common Name	Pot	Qty.
Anvi	Anvi	Anizoganthus viridis	Green Kangaroo Paw	14 cm	886
DiSS	DiSS	Dianella Silver Streak	Silver Streak	14 cm	886
Grob	Grob	Grevillea obtusifolia Gin Gin Gem	Gin Gin Gem	14 cm	886
Hepu	Hepu	Hemiandra pungens	Snakebush	14 cm	886
Olax	Olax	Olearia axillaris Little Smokie	Little Smokie	14 cm	886

POS 4 PM 07 (General - low)

Sym.	Key	Botanic Name	Common Name	Pot	Qty.
Bani	Bani	Banksia nivea	Honeypot Dryandra	14 cm	1018
Hepp	Hepp	Hemiandra pungens purpurea	Purple Snakebush	14 cm	1018
LoTa	LoTa	Lomandra Tanika	Tanika	14 cm	1018
Piro	Piro	Pimelea rosea	Rose Banjine	14 cm	1018
WeLH	WeLH	Westringea fruticosa Low Horizon	Low Horizon	14 cm	1018

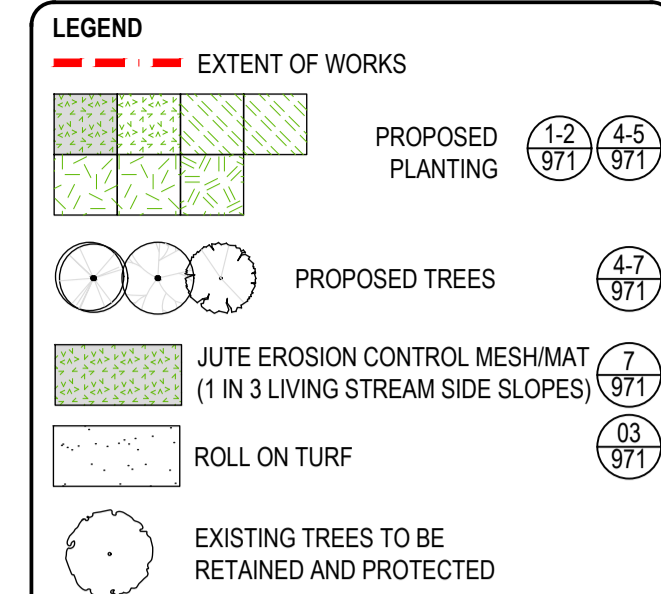
POS 4 PM 08 (General - mid)

Sym.	Key	Botanic Name	Common Name	Pot	Qty.
Beel	Beel	Beaufortia elegans	Tube	296	
CaCG	CaCG	Calothamnus quadrifidus Clean & Green	Clean & Green	14 cm	296
Grcr	Grcr	Grevillea crithmifolia	Green Carpet Grevillea	14 cm	296
Legl	Legl	Lepidosperma gladiatum	Coast Sword Sedge	14 cm	296
WeWG	WeWG	Westringea Wynabbie Gem	Wynabbie Gem	14 cm	296

POS 4 PM 09 (Under ETs)

Key	Botanic Name	Common Name	Pot	Qty.
Ama	Anizoganthus manglesii	Red Green Kangaroo Paw	Tube	1293
Gcr	Grevillea crithmifolia prostrate	Green Carpet	Tube	1293
Hpu	Hemiandra pungens	Snakebush	Tube	1293
LoT	Lomandra Tanika	Tanika	Tube	1293

PLANT AND TREE NUMBERS IN SCHEDULE ARE TO BE USED AS GUIDE ONLY. TENDERERS TO REFER LABELS ON PLANS FOR NUMBERS. PLANT NUMBERS AND SPECIES ARE SUBJECT TO AVAILABILITY.



NOTE: 2m WIDE BASE OF FLOW CHANNEL TO BE KEPT CLEAR OF PLANTING.

STANDARD NOTES

- SET OUT & DIMENSIONS.** THE CONTRACTOR SHALL SET OUT ALL PATHS, WALLS, HARD SURFACES AND ELEMENTS EITHER ON OR OFF SITE PRIOR TO CONSTRUCTION AND SHALL OBTAIN THE SUPERINTENDENT'S SET OUT APPROVAL PRIOR TO WORKS COMMENCING. WRITTEN DIMENSIONS SHALL TAKE PRECEDENCE OVER SCALE. CHECK ALL DRAWING SCALES IN CONJUNCTION WITH DRAWING SIZE.
- SERVICES & SITE ASSETS.** THE CONTRACTOR SHALL INVESTIGATE THE NATURE AND LOCATION OF ALL EXISTING SERVICES AND THE TANGIBLE SITE ASSETS AFFECTED BY THEIR WORKS. FAILURE TO TAKE DUE CARE SHALL NOT LIMIT THE CONTRACTOR'S LIABILITIES.
- REFERENCE.** THE CONTRACTOR SHALL REFER TO ALL CONTRACT DOCUMENTS, THE SPECIFICATION AND DRAWINGS PRIOR TO AND DURING THE WORKS.
- DISCREPANCIES.** NOTIFY SUPERINTENDENT OF ANY SUSPECTED OR KNOWN DISCREPANCIES OR ERRORS PRIOR TO THE ORDERING OF AFFECTED MATERIALS AND OR CONSTRUCTION OF AFFECTED WORKS.
- RELEVANT STANDARDS.** THE CONTRACTOR SHALL UNDERTAKE ALL PRICES AND WORKS IN ACCORDANCE WITH CURRENT INDUSTRY BEST PRACTICE AND ALL RELEVANT AUSTRALIAN STANDARDS.
- SERVICE LOCATOR.** THE CONTRACTOR SHALL UNDERTAKE A DIAL BEFORE YOU DIG PROCESS PRIOR TO COMMENCING WORKS ON SITE. THE CONTRACTOR SHALL ENGAGE A SERVICE LOCATOR TO MAP THE SPECIFIC LOCATIONS AND DEPTHS OF ALL SERVICES AND ADVISE ALL RELEVANT STAFF AND SUBCONTRACTORS IN WRITING PRIOR TO COMMENCING WORKS ON SITE.

REV	DATE	BY	ISSUE OR AMENDMENT
C	10.05.24	AK	ISSUE FOR APPROVAL
B	05.12.23	AK	ISSUE FOR COMMENT - 75% RESOLUTION
A	30.11.23	AK	ISSUE FOR COMMENT

THIS IS AN UNCONTROLLED DOCUMENT ISSUED FOR INFORMATION ONLY UNLESS SIGNED BELOW AT EACH RELEVANT STAGE.

INTERNAL DESIGN REVIEW
THE DESIGN IS NOT AUTHORIZED FOR CONSTRUCTION UNLESS SIGNED HERE. EMERGE DIRECTOR

INTERNAL PRE-TENDER REVIEW
THE DRAWING IS NOT AUTHORIZED FOR TENDER WITHOUT BEING INTERNALLY REVIEWED AND SIGNED HERE. EMERGE DIRECTOR

AUTHORISED FOR CONSTRUCTION
THE DRAWING IS NOT AUTHORIZED FOR CONSTRUCTION UNLESS IT IS MARKED REV 1 OR HIGHER AND IS SIGNED HERE. EMERGE DIRECTOR



PROJECT
MAHALA, FORRESTDALE

STAGE OR PHASE
LIVING STREAM POS

DRAWING TITLE
PLANTING PLAN 07
POS 4

CLIENT
ANSTEY ROAD DEVELOPMENTS PTY LTD

THE CONCEPTS OR CONTENT OF THIS DRAWING REMAIN THE PROPERTY OF EMERGE. THIS DRAWING SHALL ONLY BE USED FOR THE PURPOSE FOR WHICH IT WAS COMMISSIONED. EMERGE ACCEPTS NO RESPONSIBILITY OR LIABILITY FOR ANY ACTION OR CONSEQUENCE FROM THE UNAUTHORIZED USE OR MISUSE OF THIS DRAWING AND ITS CONTENTS OR ANY ALTERATIONS OR AMENDMENTS MADE BY OTHER PARTIES. THIS DRAWING AND ITS CONTENTS SHALL BE DEEMED CONFIDENTIAL UNLESS AGREED WITH EMERGE.

DESIGNED BY AK PRELIM DESIGN REVIEWED BY SC
DRAWN BY JW PRELIM DWG REVIEWED BY AK

DATE INITIALLY DRAWN 24.11.23
SCALE 1: 250 @ A1 METRES

DRAWING NUMBER ARF08-506
REV C

PRELIMINARY
NOT FOR CONSTRUCTION
INFORMATION ONLY