

# Cleo.

Seaside *elegance*



The Cleo in Madora Bay encapsulates connected family living, wrapped in a light, classic style inspired by relaxed seaside elegance. Welcome home to a design that moves with your family through every stage of life. With four bedrooms and four activity zones to spread out and a kitchen at the very heart of the home, it's a place where mornings begin together, meals are shared easily, and everyday living flows naturally from indoors to out.

For all the days you call it *home*



# Cleo.

DISPLAY HOME

View the display

23 Maspalomas Drive,  
Madora Bay.

Seaside Estate by Satterley.

 4
  2
  17m
 suggested lot width

Ground Floor	245.45m <sup>2</sup>
Double Garage	35.18m <sup>2</sup>
Verandah	9.18m <sup>2</sup>
Alfresco	22.24m <sup>2</sup>
TOTAL	312.05m <sup>2</sup>

---



---



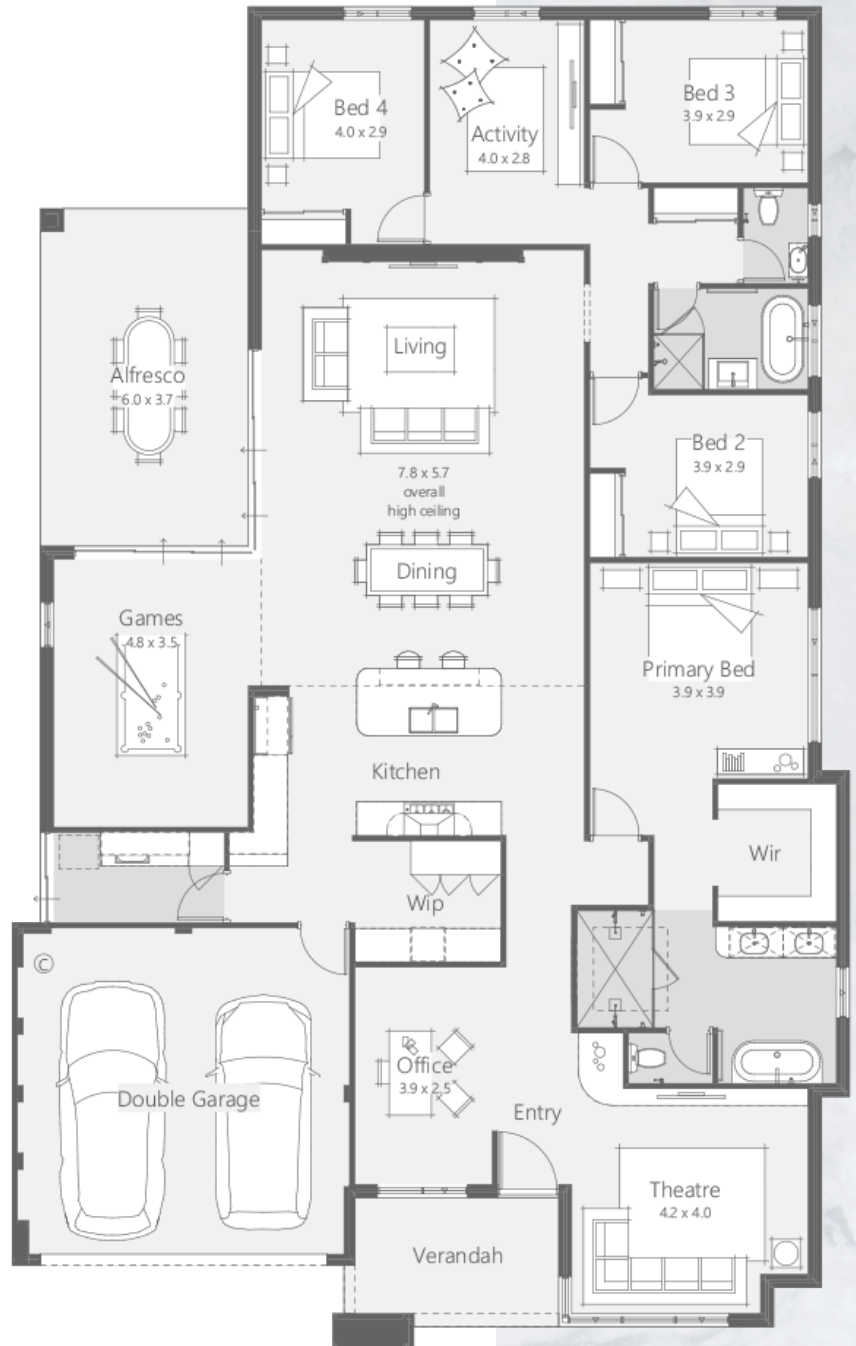
---



---



---



Speak to a New Homes Consultant *today*



SCAN FOR MORE INFO  
ABOUT THIS HOME DESIGN