

# B1



15m



4



2



2

Total Area 265m<sup>2</sup>

Living Area 201m<sup>2</sup>

# THE HANSEN

29 Maspalomas Drive Madora Bay



The Hansen is open Mondays and Wednesday from 2pm-5pm and Saturdays and Sundays 12-5pm or for a private inspection, by appointment.

Come and experience this home for yourself, as well as discovering the unique Home, Land and Finance opportunities that our specialists can offer.



(08) 9261 3131



23 Frobisher Street,  
Osborne Park WA 6017



BC 14299



b1homes.com.au



@b1homes



15m



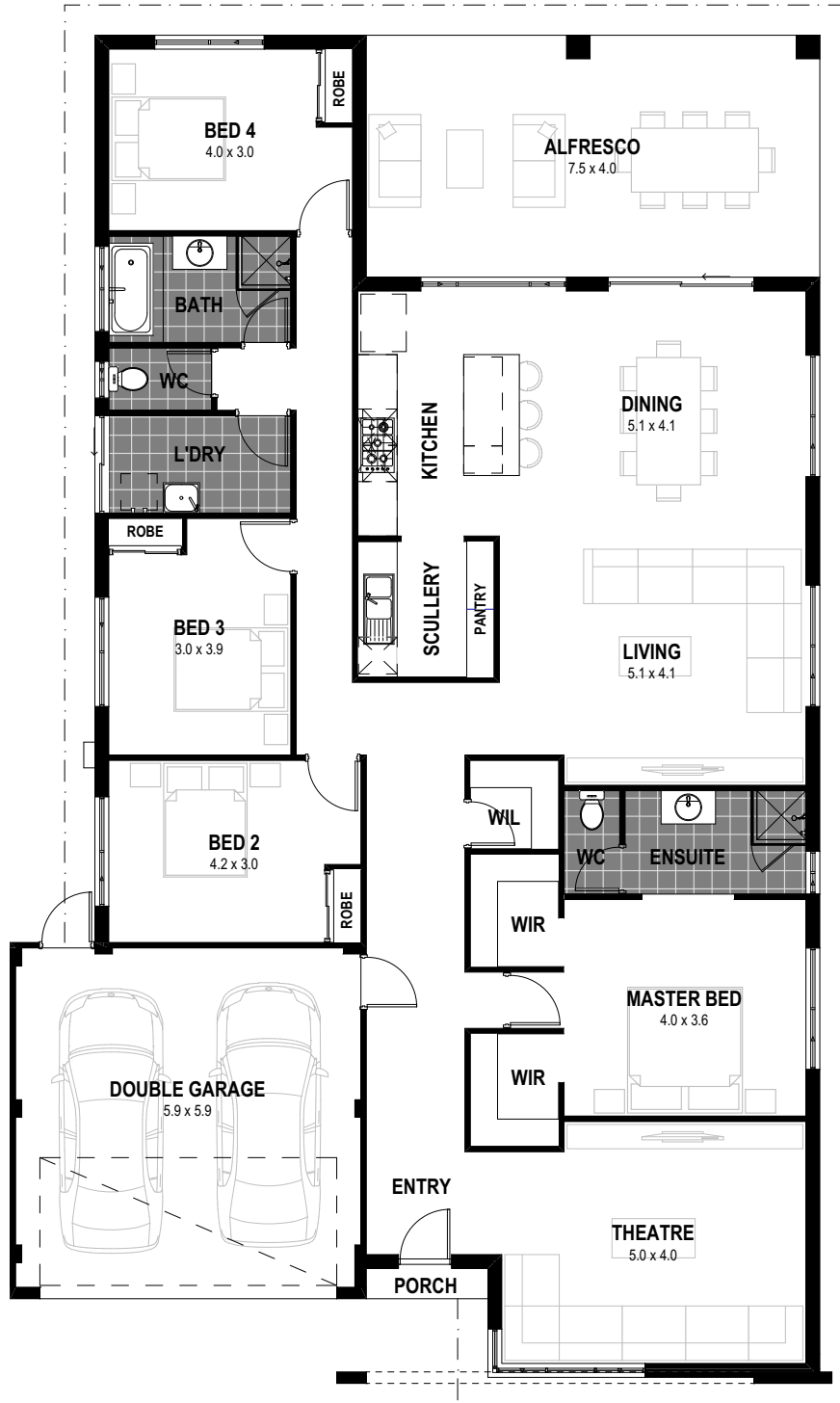
4



2



2



(08) 9261 3131



23 Frobisher Street,  
Osborne Park WA 6017



BC 14299



b1homes.com.au



@b1homes